

HOME FOUNDRY



BOOK OF INSTRUCTIONS

CONTENTS

	Page		Page
INTRODUCTION	3	Extra Moulds—C52—Popeye the Sailor	12
CASTING SETS, MOULDS, ACCESSORIES	4-16	Extra Moulds—C33—G Men	12
Set A25—The Dandy First	4	Extra Moulds—C55—Marching Trim	12
Set B22—Fighting Yanks	4	Extra Moulds—C54—Stunting	12
Electric Casting Set DX—Hell Hole Tommies	4	Extra Moulds—C32—You Can't Pass	12
Electric Casting Set—EF Flash Gordon	5	Extra Moulds—C48—Machine Gun	12
Electric Casting Set—DF Flash Gordon	5	Extra Moulds—C53—The Tough Marine	13
Electric Casting Set—EM Mickey Mouse	5	Extra Moulds—C47—Split 'Em Open	13
Electric Casting Set—DM (Large) Mickey Mouse	6	Extra Moulds—C44—Big Bad Wolf	13
Big Value Electric Casting Set—E25—Dandy First	6	ACCESSORIES	13-14
Big Value Electric Casting Set—E35—Real Action	6	Extra Paint Set	13
Professional Electric Casting Set—D21—Hell Hole Tommies	7	Heating Element, Electric	13
Professional Electric Casting Set—D22—Fighting Yanks	7	Safety Melting Ladle	13
Professional Electric Casting Set—D36—Sky Police	7	Melting Ladle, Electric	13
Professional Electric Casting Set—D45—War in Action	7	Melting Ladle, Underwriters Approved	13
Professional Electric Casting Set—D46—Pickin' 'Em Off	8	Electric Cord	14
Professional Electric Casting Set—D52—Popeye, Wimpy and Oliveoil	8	Handles, Wood, Screwtype	14
Professional Electric Casting Set—D33—G Men and Public Enemies	8	Safety Non-Slip Vise	14
Electric Casting Set—DX-1—Fighting Yanks	8	Smoking Torch	14
Master Electric Casting Set—D-100—Split 'Em Open	9	Smoking Liquid	14
EXTRA MOULDS	9-13	Extra Casting Metal	14
Extra Moulds—C21—Hell Hole Tommies	9	Instructions for Operating D, DF and D100 Electric Casting Sets	14
Extra Moulds—C22—Fightin' Yanks	9	Instructions for Operating A and B Casting Sets	15
Extra Moulds—C23—The Sky Pilot	9	Instructions for Operating E25, E35, EM, EF, and DM Electric Casting Sets	15
Extra Moulds—C24—The Speed Demon	9	Instructions for Operating DX-1 Electric Casting Sets	16
Extra Moulds—C28—Hiawatha	10	METALLION TAPPING SETS	17-19
Extra Moulds—C29—Pawnee Bill	10	No. 102—Junior Tapping Set	17
Extra Moulds—C30—Touch Down	10	No. 103—Special Tapping Set	17
Extra Moulds—C36—Sky Police	10	No. 104—Double Decker Tapping Set	17
Extra Moulds—C38—Present Arms	10	No. 103-1/2—De Luxe Tapping Set	18
Extra Moulds—C39—The Sea Raider	10	No. 104-1/2—Master De Luxe Tapping Set	18
Extra Moulds—C40—Bringin' 'Em In	10	Extra Tapping Plaques	18-19
Extra Moulds—C45—War in Action	10	Instructions for Operating Metallion Tapping Sets	19
Extra Moulds—C46—Pickin' 'Em Off	10	ELECTRIC WONDER PEN	20-24
Extra Moulds—C49—On the Bottom	10	No. 1001—Wonder Pen Outfit	20
Extra Moulds—C50—Fang & Claw	11	No. 1002—Aristocrat Wood Burning Outfit	20
Extra Moulds—C51—Jungle	11	No. 1005—Senior Wood Burning Outfit	21
Extra Moulds—C41—Mickey Mouse	11	Combination Metal Tapping and Wood Burning Outfit	21
Extra Moulds—C42—Three Little Pigs	11	Individual Electric Air-flow Wood Burning Wonder Pen	21
Extra Moulds—C43—Donald Duck	11	Individual Plaques for Wonder Pen	22-24
Extra Moulds—C31—Call to the Colors	11	Instructions for Operating the Electric Wonder Pen	24
Extra Moulds—C25—The Dandy First	11	SAND PEN, THE NEW	25-26
Extra Moulds—C35—Real Action	11	Descriptions and Instructions for Operating	25
Extra Moulds—C26—The Sharpshooter	11	Young America Sand Pen Set	25
Extra Moulds—C27—Over the Top	11	Young American De Luxe Sand Pen Set	26
Extra Moulds—C34—King Ming	12	Individual Sand Pen	26
Extra Moulds—C37—Flash Gordon	12	Glass Vials Filled with Sand	26
		Easy Pour Containers	26
		Sand Pen Glue	26
		KIRO ELECTRIC PENCIL SET	27
		Kirocraft Electric Pencil Set	27
		Individual Kiro Pencil	27
		Color Leaf	27
		Additional Transfers	27
		Instructions for Operating the Kiro Electric Pencil	27
		Consumer Packing Announcement	28
		Detailed Order Blank	28-31

HOME FOUNDRY

MFG. CO.
INC.

take great pleasure in presenting to the youth of the world this latest Book of Educational Toys and Novelties.

That our many friends have placed their unqualified stamp of approval on our product and our service, is shown by the very generous way in which they have mailed in to us their valued orders.

To show our appreciation we are ever striving to improve and enlarge our lines—to give more and better value for your money—and to add new features for your enjoyment.

In the following pages we present for the first time, in addition to the now world famous

HOME FOUNDRY CASTING SETS

and their younger cousins—the

METALLION TAPPING SETS

both of which today stand absolutely supreme in the affections of the boys and girls of America—a number of the cleverest toys ever invented, listed and described in this book for the first time.

THE ELECTRIC WONDER PEN

(U. S. Pat. No. 2031532)

A most ingenious electric appliance that has already carried the old favorite art of pyrography (wood burning) to new heights of popularity never dreamed of.

THE HOME FOUNDRY SAND PEN

This ingenious modern toy—so simple that any child can become efficient in its operation in a short time—produces the most delightfully colored pictures on printed cards furnished with each set, by the use of glue and colored sand.

And, last, but not least, what some think is the finest of all the newcomers.

THE KIRO ELECTRIC PENCIL

which with a hot tracing through colored foil produces a beautiful raised colored monogram, design, or writing on leather, silk, paper, glass; in fact, on almost any surface.

Home Foundry Casting Sets and Metallion Tapping Sets are now too well known to require comment, and ever increasing demand for these popular favorites has resulted in almost universal dealer representation for Home Foundry products in toy, hardware, drug and department stores the world over.

Insist on genuine Home Foundry products and if for any reason dealers cannot supply you, any item listed will be sent upon receipt of price shown and 25c additional on all orders under \$2.00, to cover postage and packing. On all orders west of the Rocky Mountains and Foreign Countries, 50c must be added.

HOME FOUNDRY MFG. CO., Inc.

3122-24 Fifth Avenue

CHICAGO, ILLINOIS, U. S. A.

HOME FOUNDRY "A" CASTING SETS



A25—"THE DANDY FIRST"
This set comes equipped with mold casting 5 figures $1\frac{5}{8} \times 2$ in., large upright casting ladle; non-slip (Special feature) vise; 4 large pigs of casting metal, and 1 pair of handles, in substantial cardboard box, $16 \times 9\frac{1}{4}$ in., with 6-color lithograph cover. Economy packing for dealers—12 sets to corrugated carton. Weight 33 lbs.

Price, Each, \$1.00

C35—"REAL ACTION"

5-figure mould, shown on page 11, may be substituted in above set.

HOME FOUNDRY "B" CASTING SETS

For those who prefer a non-electric set we have put up this ingenious all-equipped casting set, featuring a Home Foundry two-piece registering mould, casting three large figures; non-slip (special feature) vise; plated upright casting ladle; 12 pigs of casting metal; 4 jars of different colored paint; 2 camel's hair brushes; Home Foundry smoking torch for blacking the moulds; 2 strong wooden handles. In substantial cardboard box, $19 \times 11\frac{1}{2} \times 2\frac{1}{2}$ in., with 6-color lithographed cover. Economy packing for dealers—8 sets to corrugated carton. Weight 40 lbs.

**B22—FIGHTING YANKS**

Outfit as above described and illustrated. Set casts three figures, $2\frac{5}{8}$ in. high. Price, Each, \$2.95

C21—HELL HOLE TOMMIES

3-figure mould, shown on page 9, may be substituted in above set.

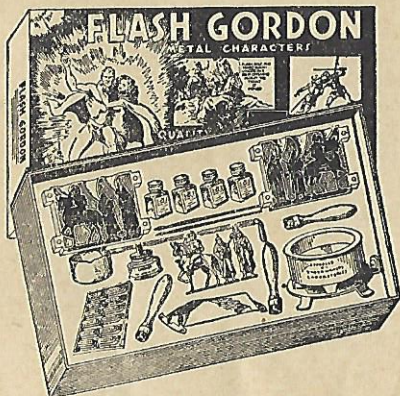
"DX"**ELECTRIC CASTING SET****"HELL HOLE TOMMIES"**

Contents of this set, developed by recent popular request, arrived too late for illustration, but promises to be one of our most popular sellers. Set contains mould casting three $2\frac{1}{8}$ in. figures; electric upright casting ladle and base; 1 non-slip (special feature) vise; 2 screw-type handles; 6 pigs casting metal; 2 bottles of paint; one camel's hair brush, and three sample figures mould casts. In $19 \times 11\frac{1}{2}$ in. cardboard box with six-color lithographed cover. Economy packing for dealers. 9 sets to corrugated carton. Weight 40 lbs.

Price, Each, \$2.50

Any Standard C Mould listed on pages 9 to 11 may be substituted in above sets.

FLASH GORDON

ELECTRIC
CASTING SETS

EF—FLASH GORDON

This popular electric casting set consists of a mould which casts three large figures 2½ in. high of Flash Gordon, Vilma and Patrolman; non-slip (special feature) vise; electric upright casting ladle and base; 2 colored wooden handles; bottle of paint; camel's hair brush; 4 large pigs of casting metal, and sample figures cast from an EF mould. In an attractive cardboard box, 16x9¼ in., with 6-color lithographed cover. Economy packing for dealers—12 sets to corrugated carton. Weight 40 lbs.

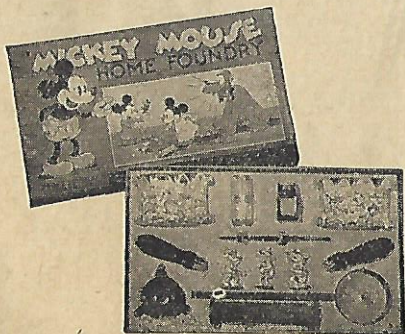
Price, Each, \$1.95

DF—FLASH GORDON

Equipped with electric melting stove (approved by Underwriters); electric upright casting ladle and has strong colored wooden screw type handle; two-piece registering Home Foundry 3-figure mould with 2 strong colored wooden handles that screw into mould; non-slip (special feature) vise; Home Foundry smoking torch for blacking the moulds; 12 pigs of casting metal; 4 jars of different colors of paint and 2 brushes, all in attractive cardboard box, 19x11½x2½ in., with beautiful 6-color lithographed cover. Economy packing for dealers—8 sets to corrugated carton. Weight 40 lbs.

Price, Each, \$3.95

MICKEY MOUSE

ELECTRIC
CASTING SETS

EM—MICKEY MOUSE

This set comes equipped with mould casting three 2⅜ in. figures; 2 wooden handles; upright electric casting ladle and base; non-slip (special feature) vise; 1 jar paint; 1 camel's hair brush, and 4 pigs of casting metal; in cardboard box 16x9¼x2 in., with 6-color lithographed cover. Economy packing for dealers—12 sets to corrugated carton. Weight, 40 lbs.

Price, Each, \$1.95



DM—(LARGE) MICKEY MOUSE

This set contains gilt mould, casting 3 large figures of Mickey, Minnie and Pluto. 2 $\frac{3}{8}$ in. high; electric casting ladle with base attached; 3 large size figure samples showing what the mould casts; 12 pigs of casting metal; non-slip (special feature) vise; 3 colored wooden handles; smoking torch; 2 bottles of colored paints and 2 camel's hair brushes. Boxed in substantial cardboard box, 16x9 $\frac{1}{4}$ x2 in., with 6-color lithographed cover. Economy packing for dealers—10 sets to corrugated carton. Weight, 45 lbs.

Price, Each, \$2.95

BIG VALUE—ALL EQUIPPED ELECTRIC SETS

This "E" Series supplies a complete electric casting set, consisting of a mould which casts five different soldiers; electric ladle and base stand; non-slip (special feature) vise; 2 colored wooden handles; 4 pigs of casting metal; 1 bottle special paint; 1 camel's hair brush, and illustrations of the different soldiers the mould casts. Comes in a substantial cardboard box, 16x9 $\frac{1}{4}$ x2 in., with beautiful 6-color lithographed cover. Economy packing for dealers—12 sets to corrugated carton. Weight, 38 lbs.



E25—DANDY FIRST

Outfit as above described and illustrated. Casts 5 figures, 1 $\frac{1}{8}$ to 2 in. high.

Price, Each, \$1.50



E35—REAL ACTION

Outfit as above described and illustrated. Casts 5 figures, 1 $\frac{1}{8}$ to 2 $\frac{3}{8}$ in. high.

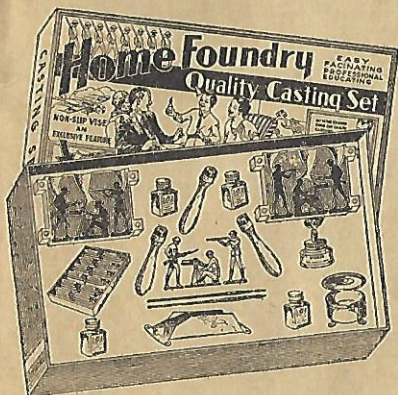
Price, Each, \$1.50

PROFESSIONAL

ELECTRIC CASTING SETS

Equipped with Underwriters Approved Melting Stove

As the name implies this "D" series presents very completely equipped outfits; they include a gilt finished mould that casts 3 large figures; Underwriter approved stove and upright casting ladle; 12 pigs of casting metal; non-slip (special feature) vise; 3 strong colored screw type handles; Home Foundry Smoking torch attachment and smoke liquid; 4 jars of colored paints and 2 camel's hair brushes. Come in substantial cardboard box, 19x11½x2½ in., with beautiful 6-color lithographed cover. Economy packing for dealers—8 sets to corrugated carton. Weight, 45 lbs.



D21—HELL HOLE TOMMIES
 "D" Outfit as above described and illustrated. Casts 3 large figures, 2⅞ in. high. Price, Each, \$3.95



D22—FIGHTING YANKS
 "D" Outfit as above described and illustrated. Casts 3 large figures, 2⅝ in. high. Price, Each, \$3.95



D36—SKY POLICE
 "D" Outfit as above described and illustrated. Casts 3 figures, 2½ in. high. Price, Each, \$3.95



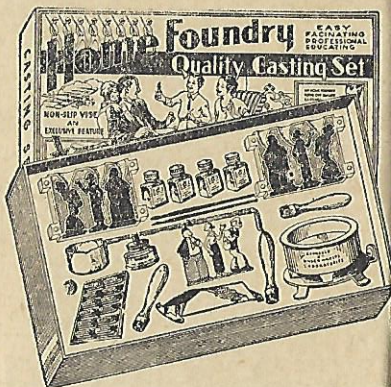
D45—WAR IN ACTION
 "D" Outfit as above described and illustrated. Casts 3 figures, 2½ in. high. Price, Each, \$3.95

Any Standard C Mould listed on pages 9 to 11 may be substituted in above sets.



D46—PICKIN 'EM OFF
 "D" Outfit as described and illustrated on Page 7. Casts 3 figures, 2½ in. high.

Price, Each, \$3.95



D52—POPEYE, WIMPY AND OLIVEOYL

"D" Outfit as described and illustrated on Page 7. Casts 3 figures, 2½ in. high. Price, Each, \$3.95

D33
G MEN AND PUBLIC ENEMIES IN ACTION



"D" Outfit as described and illustrated on Page 7. Casts figures, 2½ in. high.

Price, Each, \$3.95

NEW "DX-1" ELECTRIC CASTING SET

FIGHTING YANKS



A most complete set with gilt mould, casting 3 large figures; electric casting ladle with base attached; 3 strong colored screw-type wood handles; non-slip (special feature) vise; 12 pigs of casting metal; 2 bottles of colored paints; 2 camel's hair brushes, and 3 large size samples showing figures the mould casts. In an attractive cardboard box, 19x11½x 2½ in., with 6-color lithographed cover. Economy packing for dealers—12 sets to corrugated carton. Weight, 42 lbs.

Price, Each, \$2.95

D100 MASTER SET



Here is the last word in complete equipment for an electric casting set. It is furnished with our largest mould — 4x6 in. — casting 3 especially large size figures 3½ in. high, samples of which are included. Underwriters' approved melting stove and casting ladle; non-slip (special feature) vise; 3 strong wooden screw-type handles; 12 large pigs of casting metal; 4 jars of different colored paints; 2 camel's hair brushes; Home Foundry smoking torch attachment and bottle smoking liquid.

All attractively displayed in a substantial cardboard box, 19x11½x2½ in. in size, with a beautiful 6-color lithographed cover. Economy packing for dealers—8 sets to corrugated carton. Weight, 65 lbs.

Price, Each, \$4.95

EXTRA STANDARD MOULDS

We have found that no sooner has a boy received his Home Foundry Casting Outfit and become acquainted with it, than along comes an order for additional moulds to complement his store of figures. To take care of this demand, we have run up a lot of moulds only, packing them in substantial individual boxes with full instructions on each. Moulds now available are listed on the following pages. Size of figures moulds cast are given under each illustration. B and D sets can be equipped with any standard moulds here shown, if specified when ordering.

Any Complete Mould Shown on This Page 95c Each



C21—"Hell-Hole Tommies," 2-1/8 in. figures.



C22—"Fightin' Yanks," 2-5/8 in. figures.



C23—"The Sky Pilot," 2-1/4 in. figures.



C24—"The Speed Demon," 2-1/2 in. figures.

EXTRA STANDARD MOULDS

Any Complete Mould on This Page 95c Each



C28—"Hiawatha," 2-1/8 in. figures.



C29—"Pawnee Bill," 2-1/8 in. figures.



C30—"Touch Down," 2-1/2 in. figures.



C36—"Sky Police," 2-1/2 in. figures.



C38—"Present Arms!" 2-1/4 in. figures.



C39—"The Sea Raider," 2-1/4 in. figures.



C40—"Bringin' 'Em In," 2-1/4 in. figures.



C45—"War in Action," 2-5/8 in. figures.



C46—"Pickin' 'Em Off," 2-1/4 in. figures.



C49—"On the Bottom," 2-1/8 in. figures.

**EXTRA
STANDARD
MOULDS**



C50—"Fang and Claw," 2-5/8 in. figs.

C51—"Jungle," 2-5/8 in. figures.



C41—"Mickey Mouse," 2-3/8 in. figures.

C42—"3 Little Pigs," 2-1/8 in. figures.



**ADDITIONAL
MOULDS**



C43—"Donald Duck," 2-1/2 in. figures.

C31—"Call to Colors," 1-5/8x2-1/8 in. figures.

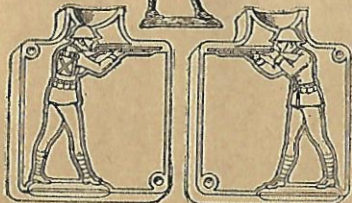


C25—"The Dandy First," 1-5/8 to 2 in. figures.

C35—"Real Action," 1-5/8 to 2-1/8 in. figures.



**Any Complete
Mould Shown
on This Page
95c Each**



C26—"The Sharpshooter," 3-1/4x2-1/2 in. figures.

C27—"Over the Top," 3-1/8x2-3/4 in. figures.

**SPECIAL
FEATURE
MOULDS**



C34—"King Ming," 2-5/8 in. figures.

C37—"Flash Gordon," 2-5/8 in. figures.



C52—"Popeye the Sailor," 2-5/8 in. figures.

C33—"G Men," 2-5/8 in. figures.

Any of above 4 Moulds \$1.00 Each



C55—"Marching Trim," 3-1/2 in. figures.

**MASTER "CX"
MOULDS**



C54—"Stunting," 3-1/2 in. figures.

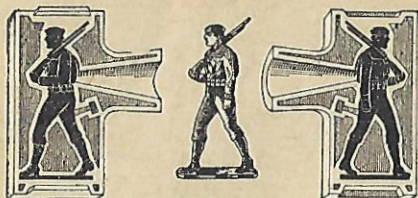


C32—"You Can't Pass!" 2-3/4 in. figures.



C48—"Machine Gun," 4 in. figures.

**Above Four
Master CX
Moulds
\$2.00 Each**



C53—"The Tough Marine," 3-1/2 in. figures.

**MASTER
CX MOULDS**



C47—"Split 'Em Open," 3-1/2 in. figures.



C44—"Big Bad Wolf," 2-5/8 in. figures.

**Any Master Mould
on This Page
\$2.00 Each**

ACCESSORIES

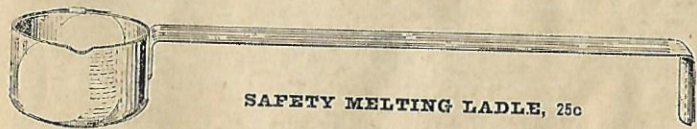


For painting metal figures. Set contains 4 different colored paints and 2 camel hair brushes.

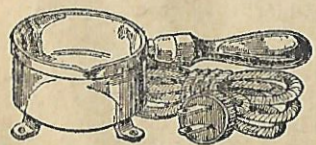


EXTRA PAINT SET, 60c

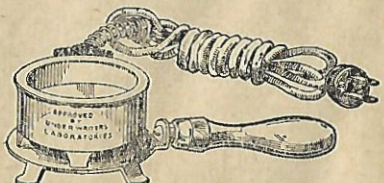
**ELECTRIC HEATING
ELEMENT, 25c**



SAFETY MELTING LADLE, 25c



**ELECTRIC MELTING LADLE 95c
(Cord 25c Extra)**



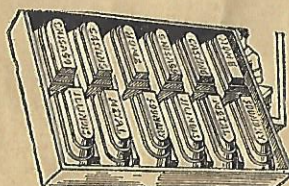
**UNDERWRITERS APPROVED
MELTING STOVE, 1.25
(Cord 25c Extra)**

ACCESSORIES—Continued

ELECTRIC CORD—To be used with electric stoves or ladle.
Price, Each 25c



SAFETY NON-SLIP VISE, 25c



FX—12 LARGE FIGS METAL IN BOX, 35c

FA—QUICK MELTING SIZE CASTING METAL

This metal, especially developed for Home Foundry Casting, is put up in the popular quick melting size. 36 pigs in colored cardboard box. Packed 24 to a carton. Weight, 40 lbs. Per Box, 50c



SCREW-TYPE HANDLES, PER PAIR, 15c



HOME FOUNDRY SMOKING LIQUID, 15c
HOME FOUNDRY SMOKING TORCH, 25c



F—36 LARGE FIGS CASTING METAL, 95c

OPERATING INSTRUCTIONS

ALL MOULDS MUST BE SMOKED

INSTRUCTIONS FOR OPERATING
"D," "DF" and "D100"
ELECTRIC CASTING SETS

- First*—Attach handles by screwing them on to moulds, turning to the right.
- Second*—Smoke the entire surface of the mould on the sides where the figures are until they are entirely blackened. Smoke them over Home Foundry Smoking Torch.
- Third*—Place the two halves of the moulds together, then slide them into the mould clasp through the side of the clasp that has the corners bent outward to receive the mould. Make sure that the mould is in the center of the clasp and that the bottom of the mould is all the way down against the bottom plate of the clasp.
- Fourth*—The mould clasp can be screwed on top of whatever you use for a work bench.

- Fifth*—Connect handle to the Electric Melting Stove by turning to the right. Place sufficient casting metal in casting ladle. Use iron cord to connect to the prongs of the melting stove and let melt until metal is entirely fluid.
- Sixth*—To cast figures pour enough metal into the openings (gates) of the mould until they are almost full.
- Seventh*—To remove casting take hold of both handles and slide the mould out of the clasp; then separate the halves of the mould and remove the castings. Do not touch the casting with your bare hands while they are hot.
- Eighth*—Remove surplus metal such as the gates by snapping them off the castings. This surplus metal can be used over again.
- Ninth*—Use brushes and HOME FOUNDRY Special Paints for coloring your castings. Stir the paints well before using.

INSTRUCTIONS FOR OPERATING "A" AND "B" CASTING SETS

- First*—Attach handles by screwing them on to moulds, turning to the right.
- Second*—Smoke the entire surface of the mould on the sides where the figures are until it is entirely blackened. Smoke them over HOME FOUNDRY SMOKING TORCH or candle.
- Third*—Place the two halves of the moulds together then slide them into the mould clasp through the side of the clasp that has the corners bent outward to receive the mould. Make sure that the mould is in the center of the clasp and that the bottom of the mould is all the way down against the bottom plate of the clasp.
- Fourth*—The mould clasp can be screwed on top of whatever you use for a work bench.
- Fifth*—Place sufficient casting metal in the ladle and heat over HOME FOUNDRY ELECTRIC MELTING STOVE or a gas flame or similar heating device until the metal is entirely fluid.
- Sixth*—To cast figures pour enough metal in the openings (gates) of the mould until they are almost full.
- Seventh*—To remove casting take hold of both handles and slide the mould out of the clasp; then separate the halves of the moulds and remove the castings. Do not touch the castings with your bare hands while they are hot.
- Eighth*—Remove surplus metal such as the gates by snapping them off at the castings. This surplus metal can be used over again.
- Ninth*—Use brushes and HOME FOUNDRY Special Paints for coloring your castings. Stir the paints well before using.

INSTRUCTIONS FOR OPERATING E-25, E-35, EM, EF, or AM, DM ELECTRIC CASTING SETS

- First*—Attach handles by screwing them on the moulds, turning to the right.
- Second*—Smoke the inner surface of the mould where the figures are over the Home Foundry Smoker or candle until it is entirely blackened.

Third—Place the two halves of the moulds together, then slide them into the mould clasp through the side of the clasp that has the corners bent outward to receive the mould. Make sure that the mould is in the center of the clasp and that the bottom of the mould is all the way down against the bottom plate of the clasp.

Fourth—For easier handling the mould clasp can be attached to the top of whatever you use for a work bench.

Fifth—Place sufficient casting metal in ladle, attach electric cord, using electric ironing cord and other household heating cord, and plug into electric socket. Let melt until metal is entirely fluid.

Sixth—To cast figures pour metal into openings (gates) of the mould until they are almost full.

Seventh—To remove castings take hold of both handles and slide the moulds out of the clasp; then separate the halves of the mould and remove the castings. Do not touch the castings with your bare hands while they are still hot.

Eighth—Remove surplus metal by snapping it off the castings. This surplus metal can be used over again.

Ninth—Use brushes and HOME FOUNDRY Special Paints for coloring your castings. Stir the paints well before using.

INSTRUCTIONS FOR OPERATING "DX1" ELECTRIC CASTING SETS

First—Attach handles by screwing them on to mould, turning to the right.

Second—Smoke the inner surface of the mould where the figures are over the Home Foundry Smoker or candle until it is entirely blackened.

Third—Place the two halves of the moulds together, then slide them into the mould clasp through the side of the clasp that has the corners bent outward to receive the mould. Make sure that the mould is in the center of the clasp and that the bottom of the mould is all the way down against the bottom plate of the clasp.

Fourth—For easier handling the mould clasp can be attached to the top of whatever you use for a work bench.

Fifth—Connect handle to electric melting ladle by turning to the right. Place sufficient casting metal in ladle for figures you wish to cast. Use ironing cord to connect electric ladle and melt until metal is entirely fluid. Use heavy asbestos pad or similar protection under the ladle while in use.

Sixth—To cast figures pour metal into openings (gates) of the mould until they are almost full.

Seventh—To remove castings take hold of both handles and slide the moulds out of the clasp; then separate the halves of the mould and remove the castings. Do not touch the castings with your bare hands while they are still hot.

Eighth—Remove surplus metal by snapping it off the castings. This surplus metal can be used over again.

Ninth—Use brushes and HOME FOUNDRY Special Paints for coloring your castings. Stir the paints well before using.

**NOTE—ALL MOULDS MUST BE THOROUGHLY
SMOKED**

METALLION TAPPING SETS

Here's the last word in a most fascinating novelty for the boy or girl of five and over—interesting and instructive—easy to operate—designs come printed on silverite and brass metal. Finished plaques, used as book-ends or hangings, make beautiful confirmation, graduation, birthday and holiday gifts. Five different sets to choose from and a varied assortment of extra designs to supplement whatever set you choose. All sets packed in beautifully illustrated substantial cardboard boxes showing operation of the sets in colors, with full instructions printed on inside of covers.



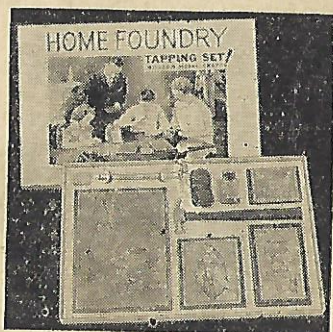
No. 102

No. 102—This is our Junior Tapping Set, and while inexpensive in price, contains everything needed to produce these beautiful new novelties. Set contains: Three various design plaques, tapping hammer and tapping tools, scouring wool for polishing and special lacquer and brush to finish.

Price, Each, 69c

No. 103—A larger set, providing a large assortment of designs and a real item for promotion. Contains tapping hammer, punch and tapping tools, scouring wool for polishing and special lacquer and brush.

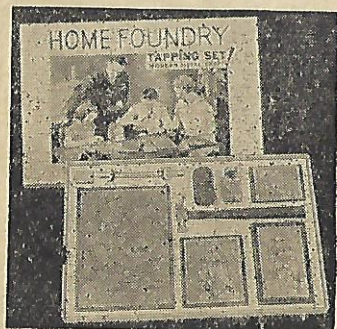
Price, Each, \$1.00



No. 103

No. 104—DOUBLE-DECKER — This set comes equipped with eight large assorted size plaques which will be found desirable for a wide variety of gift purposes, the usual tapping hammer, tapping tools and brush, and scouring wool and lacquer.

Price, Each, \$2.00



No. 104

DE LUXE TAPPING SETS

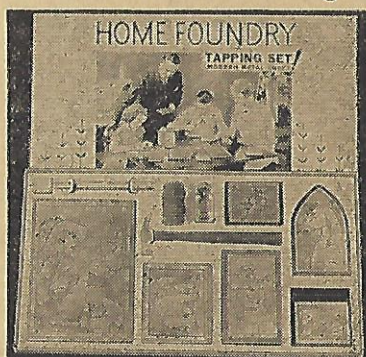
These fine DeLuxe tapping sets are the delight of the operator who has mastered the metal tapping art and now wants the best in style and design. While the mechanical equipment is similar to sets described on Page 17, the plaques in the DeLuxe sets are silver foil lined, and the No. 104½ set contains 12 large plaques, of which four are book ends.



No. 103-1/2

No. 104½—In the De Luxe Master Set, here shown, we have assembled all that's best in metal tapping sets and designs. Equipment as illustrated—two layers to the box—12 large assorted design plaques.

Price, Each, \$3.00



No. 104-1/2

EXTRA TAPPING PLAQUES



509
3x4 in.
15c



504
5-1/2x4-1/2 in.
25c



508
5-1/2x4-1/2 in.
25c



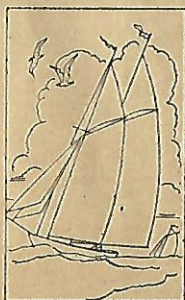
506
6-1/2x4 in.
25c



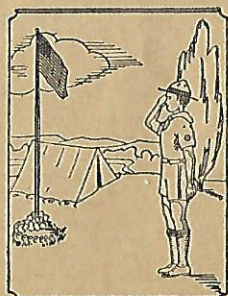
505
3x4 in.
15c



511—3-5/8x5 in.—25c



512—3-3/8x5-5/8 in.—25c



513—3-5/8x5 in.—25c

EXTRA TAPPING PLAQUES



501
7x10 in.
35c



510
Bookends
(4 pieces)
50c



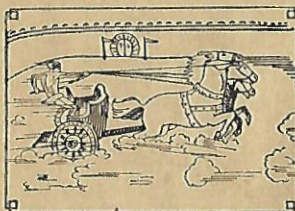
503
6-1/2x4 in.
25c



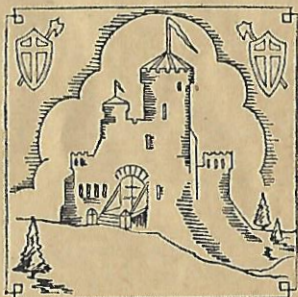
507
6-1/2x4 in.
25c



516—7-1/4x4 in.—30c



514—5-1/4x3-5/8—25c



515—4x4 in.—25c

INSTRUCTIONS FOR OPERATING METALLION TAPPING SETS

- First*—Fasten the metal to wooden mount with nails furnished, punching holes with pointed tool in dots indicated along the edges for that purpose.
- Second*—Start your picture by outlining the edges first, using lining tool. Hold tool upright with thumb and forefinger, resting third and fourth fingers on the metal to steady it.
- Third*—Holding the hammer in the right hand, with the forefinger along the handle, make your strokes with firm, easy taps of as nearly same force possible, taking care not to pierce metal.
- Fourth*—When you have tapped the outline continue with the rest of the design, always working from the outside toward the center and using the tool best suited for the design—the line tool for straight lines—the pointed one to fill in the background as called for by the picture.
- Fifth*—After completing the tapping the unworked portion of design will appear raised in bas-relief. If not high enough go over background again, striking a little harder.
- Sixth*—Now wipe off what remains of the original working design. Use the steel wool furnished with your set and polish the finished metal design only. Be careful not to dampen nor polish the sides or back of the plaque. The metal plaque should be polished to a high brilliant finish. Then brush on a thin coat of lacquer to preserve the lustrous finish and keep from tarnishing.

NOTE. Be sure you do not pierce the metal.

ELECTRIC WONDER PEN

(U. S. Pat. No. 2031532)

Always first with the newest novelties, Home Foundry Mfg. Co. registers another scoop with the New Electric Wonder Pen here presented.

This ingenious contrivance centers the heat furnished by an electric heating element into the fine space of a pen point, enabling the operator to write, print or sketch with the hot point on wood, leather, cork, velvet, cardboard or other similar surface. While but very little current is needed to make and keep the pen hot for efficient operation, the pen grip is kept comfortable to hold by our patented Air-flow feature.

Pen is easy to operate—nothing to get out of order—all you need to do is plug into any convenient light socket, wait a few moments until the point becomes hot and you are ready to go.

We have assembled and now offer this fascinating new novelty in four popular sets as follows:



No. 1001

No. 1001—WONDER PEN OUTFIT

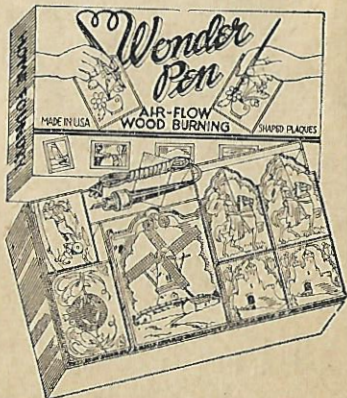
This set comprises the patented Electric Air-flow Wood Burning Wonder Pen, with bakelite handle, cord and plug attached; 4 large 3-ply basswood plaques, with designs printed, ready for burning; 1 palette, different colors of paint and brush, and 1 strip of finishing sand paper, attractively boxed in substantial cardboard box, 16x9 1/4 in., with 4-color lithographed cover. Economy packing for dealers—24 sets to corrugated carton. Weight, 33 lbs.

Price, Each, \$1.00

No. 1002—ARISTOCRAT WOOD BURNING OUTFIT

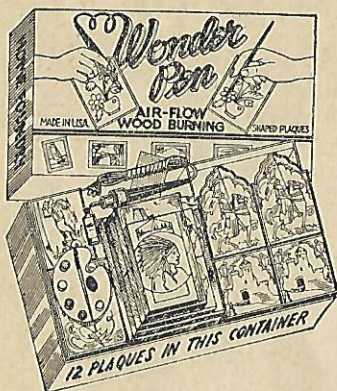
Consists of 1 Electric Air-flow Wood Burning Wonder Pen, with bakelite handle, cord and plug attached; 7 large 3-ply artistically shaped basswood plaques, printed with attractive designs ready for burning; these include one pair of 4-piece book ends; six-color palette and brush, and strips of finishing sand paper. Arranged in substantial cardboard box, 19x11 1/2 in., with beautiful 6-color lithographed cover. Economy packing for dealers—12 sets to corrugated carton. Weight, 22 lbs.

Price, Each, \$2.00



No. 1002

No. 1005—SENIOR WOOD BURNING OUTFIT



No. 1005

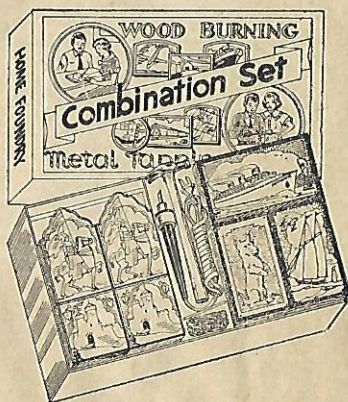
This is our most completely equipped outfit; it carries 1 Electric Air-flow Wood Burning Wonder Pen, with bakelite handle, cord and plug; 12 artistically shaped 3-ply Basswood plaques, printed with our choicest designs for burning; six color palette and brush, and strips of finishing sand paper—the most beautiful set ever put on the market. In 19x11½ in. cardboard box, with 6-color lithographed cover. Economy packing for dealers—12 sets to corrugated carton. Weight, 30 lbs.

Price, Each, \$3.00

No. 300—COMBINATION METAL TAPPING AND WOOD BURNING OUTFIT

To meet the demands of friends who were quick to see the artistic possibilities of combining metal tapping and wood burning, this set was developed. It consists of 1 Electric Air-flow Wood Burning Wonder Pen complete; 4 piece book ends, with attractively matched designs printed on 3-ply Plywood, size 6x4 in.; 3 printed brass mounted tapping plaques, size 7½x4½ in. and 5x3½ in.; 1 claw tapping hammer; 1 tapping tool, and 1 roll of fine steel scouring wool, in substantial cardboard box, 19x11½ in., with 3-color cover. Economy packing for dealers—12 sets to corrugated carton. Weight, 30 lbs.

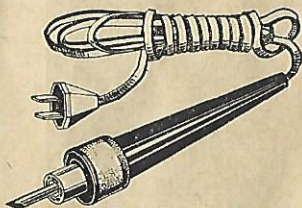
Price, Each, \$2.00



No. 300

INDIVIDUAL ELECTRIC AIR-FLOW WOOD BURNING WONDER PEN No. 1075

The Electric Air-flow Wood Burning Wonder Pen, with bakelite handle, is made of the best materials obtainable. The point is fixed permanently to discourage any tampering by the user, as it contains the fine heating element, which is really the heart of the pen. It should be handled with ordinary care and will give thorough satisfaction. Packed complete with a sturdy well-insulated approved resistance cord of extreme flexibility with non-breakable plug.



Price, Each, 75c

INDIVIDUAL PLAQUES

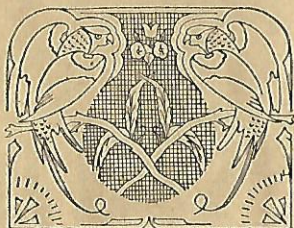
Although the Electric Air-flow Wood Burning Wonder Pen has been on the market but a short time it has met with such universal approval that to supply the demand for additional plaques we have selected our most popular designs and list them here for individual selection.



1006—3-3/8x5-5/8 in.—15c



1007—3-3/8x5-5/8 in.—15c



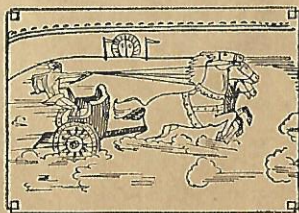
1010—5-1/2x4-1/2 in.—25c



1009—3-3/8x5-5/8 in.—15c



1008—3-5/8x5-5/8 in.—15c

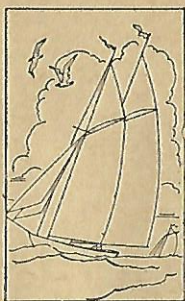


1011—5-1/4x3-5/8 in.—20c

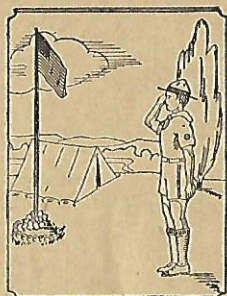
INDIVIDUAL PLAQUES



1012—3-5/8x5 in.—15c



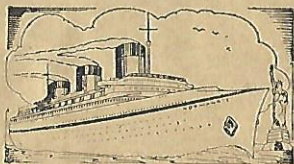
1013—3-3/8x5-5/8 in.—15c



1014—3-5/8x5 in.—15c



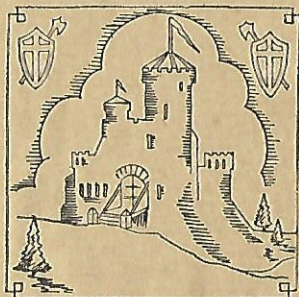
Pair
1016—7-1/2x5 in.—25c



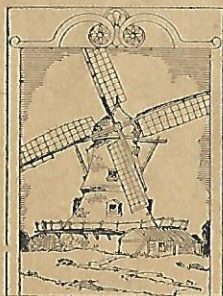
1015—7-1/4x4 in.—25c



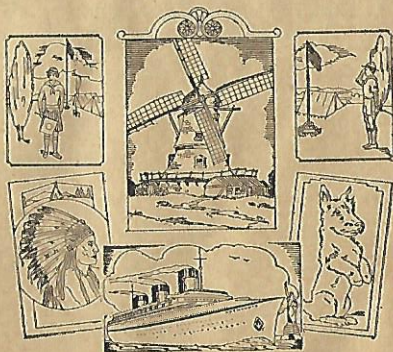
1017—4x6 in.—25c



1018—4x4 in.—20c

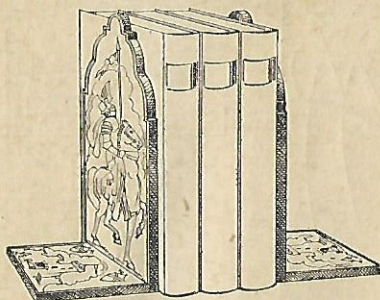


1019—6x8 in.—25c



1020—"Our Favorites"—Six Plaques for \$1.00—Sizes Range from 3-1/2 to 8 in. Packed in substantial cardboard wrapping.

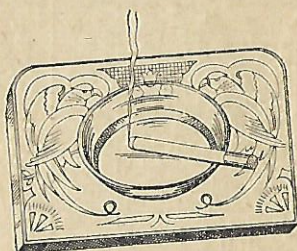
SPECIAL FEATURE PLAQUES



KING ARTHUR BOOK ENDS

No. 1021—One of our most popular numbers. Size 4x6 in.

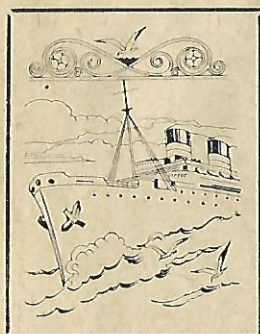
Price, Per Pair, 50c



**SPECIAL DESIGN
ASH TRAY**

No. 1022 — Selected basswood; modernistic bird design. Fitted with ash tray receptacle. Size 5½x 4½ in.

Price, 35c



No. 1023

Square Panel Wall Hanging. Size 6x8 in.

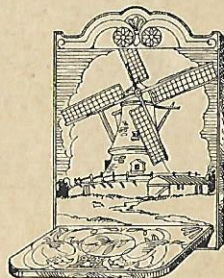
Price, Each, 25c



No. 1024

Shaped Panel Wall Hanging. Size 6x8 in.

Price, Each, 35c



No. 1025

Whatnot Rack Complete. Size 6x8 in.

Price, Each, 50c

**INSTRUCTIONS FOR OPERATING
ELECTRIC WONDER PEN**

First—Plug into any convenient electric socket and then wait until the point becomes hot before attempting to operate.

Second—Place plaque or object to be decorated on table before you in easy writing position.

Third—When pen is hot etch with a slow even motion, following the lines of the printed picture, using the various sides of the pen for shading. To make lines heavier turn pen over until you get thickness desired. A little practice will enable you to get the best results.

Fourth—After the etching is completed the plaque should be colored, shellacked or waxed to preserve the beautiful shades obtained in the burning.

Additional plaques ready printed for burning are shown on pages 22 to 24 and listed on Order Blank on page 31.

THE NEW SAND PEN

So simple that you marvel that no one thought of it before, yet it produces the most delightful tinted pictures imaginable. Kids everywhere go crazy over it, and spend hours developing new color schemes, blends and combinations. Has been suggested as principal art study help in the lower grades of public schools. You'll get to know it better by reading the instructions, so, in this case we'll print them first instead of at the end as in the other features in this book.

DESCRIPTION AND INSTRUCTIONS FOR OPERATING

Nothing to get out of order and it is simplicity personified. Pen consists of glass barrel which carries fine tinted sand to color the pictures, the flow of which is controlled by the pen proper—a most ingenious rubber contrivance gripped between thumb and finger in holding the pen. Pressure on the rubber controls the flow of sand as desired—light pressure light line; stronger pressure heavy line.

In preparing the picture for coloring, the various colors to be used on the different parts of the picture are first determined. Next all spots to carry a certain color—red for instance—are given a thin even coating of a specially prepared glue applied with a fine brush furnished with the set and you are then ready to sand. This is done by following your glue with the red sand with pen close to the picture but not touching the glue, until wet glue is fully covered. Then shake off the excess sand by tapping back of card lightly and return excess to container. Repeat this process with each color desired until design is completed. By trimming off any sand that overlaps color margins with end of brush handle or pointed piece of wood, your picture is kept trim and neat.

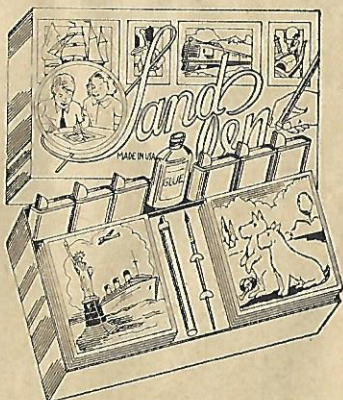
Innumerable color combinations will suggest themselves as the operator becomes more fully acquainted with his sets and the blends possible by mixing two or more colors are limited only by the operator's imagination.

Helpful suggestions of colors to be used in tinting are printed inside the covers of the various sets.

Shake the glue well before using to insure a smooth even mixture. This delightful novelty is now offered in two popular priced combinations, as follows:

YOUNG AMERICA SAND PEN SET—No. 501

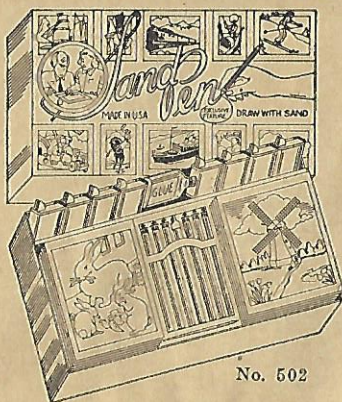
This outfit consists of 1 Home Foundry Sand Pen complete, 12 cards, size $6\frac{3}{8} \times 6\frac{7}{8}$ in., printed for sand coloring; 6 "easy-pour" metal containers filled with different colors of sand; 1 bottle of Sand Pen glue, and 1 camel's hair brush. Boxed in a substantial cardboard container, size $9\frac{1}{4} \times 16$ in., with 6-color lithographed cover. Economy packing for dealers—12 sets to corrugated carton. Weight, 36 lbs.



Price, Each, \$1.00

No. 501

YOUNG AMERICA DE LUXE SAND PEN—No. 502

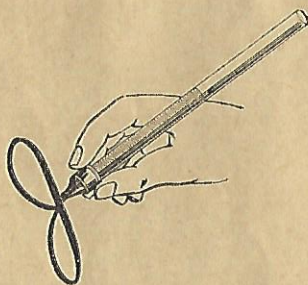


No. 502

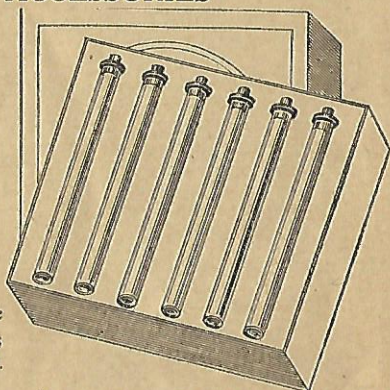
Price, Each, \$2.00

In this DeLuxe Outfit you will receive 12 large cards, size $6\frac{3}{8} \times 8\frac{7}{8}$ in., printed with 12 beautiful pictures, specially suitable for Sand Pen coloring; 1 Home Foundry Sand Pen complete; 6 glass vials of colored sand, same size and interchangeable with glass barrel of your sand pen by simply taking out rubber stopper and slipping on the Sand Pen head to change colors; 8 additional colors of sand in "easy-pour" metal containers; 1 large bottle of Sand Pen glue, and 1 camel's hair brush. Attractively displayed in cardboard box, size $19 \times 11\frac{1}{2}$ in., with 6-color lithographed cover. Economy packing for dealers—12 sets to corrugated carton. Weight 45 lbs.

SAND PEN ACCESSORIES



No. 503 Price, Each, 25c
Sand Pen complete with glass barrel and rubber writing head.



No. 504 Price, Per Box, 50c
Six Glass Vials filled with different colors of sand. Interchangeable with glass barrel of Sand Pen, 6 in a box.



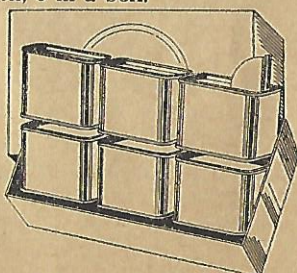
No. 505

Sand Pen Glue and Camel's Hair Brush. Price, Per Set, 20c

No. 506

12 Extra Large Sand Pen Cards, sizes $6\frac{3}{8} \times 8\frac{7}{8}$ in. Beautiful assorted designs.

Price, Per Set, 50c



No. 507 Price, Per Box, 50c
1 Box Six different colors of sand in "Easy-pour" metal containers.

THE KIRO ELECTRIC PENCIL

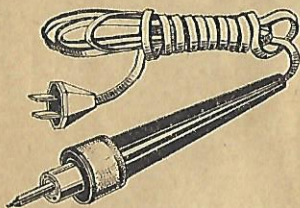
Here's one of the finest novelties that's ever been invented—an instrument that will emboss in any color on leather, cloth, china, glass-ware, celluloid, cellophane, wood, paper, in fact, on almost any surface and does it so easily that we have called it the "Electric Pencil." All you have to do is to place a specially prepared foil, furnished with the set, on the surface to be inscribed and then with the electrically heated Kiro Pencil slowly trace out whatever you wish to write. The heated iron transfers the foil indelibly onto the fabric as it passes over the foil, leaving a handsomely raised surface lettering or design. A complete set of alphabets and decorative designs to trace from is part of the set.

Think of the fun you can have lettering your monogram on all your private articles—Hair Brush, Gloves, Stationery, Suitcase, Camera, etc., and many a quarter can be earned by doing the same thing for your friends, for they, too, will want their possessions monogrammed when they see how swell yours look.

KIROCRAFT ELECTRIC PENCIL SETS

Included in this fascinating set are 1 Electric Kiro Pencil with cord and plug attached; 6 Rolls of Assorted Victor Color Leaf; assorted pattern designs and alphabets to use for tracing, and 1 metal rule and pattern template. Comes in a substantial cardboard box, 12½x10¼x2 in. Economy packing for dealers—24 sets to corrugated carton. Weight, 30 lbs.

Price, Each, \$1.00



THE KIRO ELECTRIC PENCIL

Pencil carries a fine heating element permanently fixed in the head where it can not be tampered with. Uses very little electricity and is safe to use on the most delicate materials. Comes equipped with cord and plug attached ready for use.

Price, Each, 75c

COLOR LEAF—2 in. wide, in standard rolls—available in six popular colors—silver, gold, blue, white, red and green. Specify colors wanted.

Price, Per Roll, 10c

ADDITIONAL TRANSFERS—Sizes 11x8½ in. can be had at

Price, Each, 10c

INSTRUCTIONS FOR OPERATING

- First*—Insert plug into any convenient electric socket (110-120) volts and allow a few minutes for the point to get hot enough to hiss when touched with moistened finger.
- Second*—Place the article you wish to inscribe or decorate in easy writing position before you, covering the spot to be printed with the Color Leaf, six shades of which are included with every set.
- Third*—Carefully place the pattern to be followed on the color leaf, holding it firmly to prevent shifting.
- Fourth*—Now with a firm, steady hand trace the pattern with the hot point of the pencil, using the same easy pressure on all upward and downward strokes. Write slowly. Remember, the point must always be in contact with the leaf at all positions of the stroke—lifting the pen causes a break in the writing. With a little practice you will quickly learn what pressure to use to get desired effects.
- Designs or inscriptions can be made in various colors by inserting colors wanted—one at a time—between the design copied and the material, but be sure to avoid shifting.
- Cork finger guard on the handle should be about one-half inch back from the point. Should handle become warm, push guard farther back on the handle.

CONSUMER PACKING

If your dealer cannot supply you, any item ordered will be sent upon receipt of price shown and 25c additional on all orders under \$2.00, to cover postage and packing.

NOTE—On orders west of the Rocky Mountains and foreign countries, 50c must be added.

ORDER BLANK

Date.....

Home Foundry Mfg. Co., Inc.
3122-24 Fifth Avenue, Chicago.

Gentlemen:

Please ship to address below items checked in the following list:

Money Order Enclosed, for \$.....

See CONSUMER PACKING Instructions Above.

- A 25 The Dandy First, casting outfit, complete.....\$1.00
- A 35 Real Action, casting outfit, complete..... 1.00

ELECTRIC CASTING SETS

- EM Mickey Mouse, casting outfit, complete.....\$1.95
- E 25 The Dandy First, casting outfit, complete..... 1.50
- E 35 Real Action, casting outfit, complete..... 1.50
- EF Flash Gordon, casting outfit, complete..... 1.95

STANDARD CASTING SETS

- B 21 Hell Hole Tommies, casting outfit, complete.....\$2.95
- B 22 Fighting Yanks, casting outfit, complete..... 2.95
- B 23 The Sky Pilot, casting outfit, complete..... 2.95
- B 24 The Speed Demon, casting outfit, complete..... 2.95
- B 28 Hiawatha, casting outfit, complete..... 2.95
- B 29 Pawnee Bill, casting outfit, complete..... 2.95
- B 30 Touch Down, casting outfit, complete..... 2.95
- B 36 Sky Pilot, casting outfit, complete..... 2.95
- B 38 Present Arms, casting outfit, complete..... 2.95
- B 39 The Sea Raider, casting outfit, complete..... 2.95
- B 40 Bring 'Em In, casting outfit, complete..... 2.95
- B 45 War in Action, casting outfit, complete..... 2.95
- B 46 Picking 'Em Off, casting outfit, complete..... 2.95
- B 49 On the Bottom, casting outfit, complete..... 2.95
- B 50 Fang and Claw, casting outfit, complete..... 2.95
- B 51 Jungle, casting outfit, complete..... 2.95

Check items wanted in above list; write your name and address below and tear out and mail to Home Foundry Mfg. Co., Inc., 3122-24 Fifth Avenue, Chicago. Our latest revised book will be included with your shipment.

NAME.....

ADDRESS.....

CITY.....STATE.....

Write or Print Name and Address Plainly.

ELECTRIC CASTING SETS

<input type="checkbox"/>	DX, Hell Hole Tommies, casting outfit, complete.....	\$2.50
<input type="checkbox"/>	DM Mickey Mouse (Large), casting outfit, complete.....	2.95
<input type="checkbox"/>	D 21 Hell Hole Tommies, casting outfit, complete.....	3.95
<input type="checkbox"/>	D 22 Fighting Yanks, casting outfit, complete.....	3.95
<input type="checkbox"/>	D 23 The Sky Pilot, casting outfit, complete.....	3.95
<input type="checkbox"/>	D 24 The Speed Demon, casting outfit, complete.....	3.95
<input type="checkbox"/>	D 28 Hiawatha, casting outfit, complete.....	3.95
<input type="checkbox"/>	D 29 Pawnee Bill, casting outfit, complete.....	3.95
<input type="checkbox"/>	D 30 Touch Down, casting outfit, complete.....	3.95
<input type="checkbox"/>	D 36 Sky Police, casting outfit, complete.....	3.95
<input type="checkbox"/>	D 38 Present Arms, casting outfit, complete.....	3.95
<input type="checkbox"/>	D 39 The Sea Raider, casting outfit, complete.....	3.95
<input type="checkbox"/>	D 40 Bringing 'Em In, casting outfit, complete.....	3.95
<input type="checkbox"/>	D 45 War in Action, casting outfit, complete.....	3.95
<input type="checkbox"/>	D 46 Picking 'Em Off, casting outfit, complete.....	3.95
<input type="checkbox"/>	D 49 On the Bottom, casting outfit, complete.....	3.95
<input type="checkbox"/>	D 50 Fang and Claw, casting outfit, complete.....	3.95
<input type="checkbox"/>	D 51 Jungle, casting outfit, complete.....	3.95
<input type="checkbox"/>	DF Flash Gordon (De Luxe), casting outfit, complete.....	3.95
<input type="checkbox"/>	D 52 Popeye, Whimpy and Oliveoyl, casting outfit, complete	3.95
<input type="checkbox"/>	D 33 G-Men and Public Enemies in Action, casting outfit, complete.....	3.95
<input type="checkbox"/>	DX-1 Fightin' Yanks, casting outfit, complete.....	2.95
<input type="checkbox"/>	D 100 Master, casting outfit, complete.....	4.95

EXTRA STANDARD MOULDS

Make 3 Large Figures

<input type="checkbox"/>	C 21 Hell Hole Tommies. Size of figure 2½ in.....	\$0.95
<input type="checkbox"/>	C 22 Fighting Yanks. Size of figure 2½ in.....	.95
<input type="checkbox"/>	C 23 The Sky Pilot. Size of figure 2¼ in.....	.95
<input type="checkbox"/>	C 24 The Speed Demon. Size of figure 2½ in.....	.95
<input type="checkbox"/>	C 28 Hiawatha. Size of figure 2½ in.....	.95
<input type="checkbox"/>	C 29 Pawnee Bill. Size of figure 2½ in.....	.95
<input type="checkbox"/>	C 30 Touch Down. Size of figure 2½ in.....	.95
<input type="checkbox"/>	C 36 Sky Police. Size of figure 2½ in.....	.95
<input type="checkbox"/>	C 38 Present Arms. Size of figure 2¼ in.....	.95
<input type="checkbox"/>	C 39 The Sea Raider. Size of figure 2¼ in.....	.95
<input type="checkbox"/>	C 40 Bringing 'Em In. Size of figure 2¼ in.....	.95
<input type="checkbox"/>	C 45 War in Action. Size of figure 2½ in.....	.95
<input type="checkbox"/>	C 46 Picking 'Em Off. Size of figure 2¼ in.....	.95
<input type="checkbox"/>	C 49 On the Bottom. Size of figure 2½ in.....	.95
<input type="checkbox"/>	C 50 Fang and Claw. Size of figure 2½ in.....	.95
<input type="checkbox"/>	C 51 Jungle. Size of figure 2½ in.....	.95
<input type="checkbox"/>	C 41 Mickey Mouse. Size of figure 2¾ in.....	.95
<input type="checkbox"/>	C 42 Three Little Pigs. Size of figure 2½ in.....	.95

ADDITIONAL MOULDS

Make 1 to 5 Figures

<input type="checkbox"/>	C 25 The Dandy First. Size of figure 1½ to 2 in.....	\$0.95
<input type="checkbox"/>	C 35 Real Action. Size of figure 1½ to 2½ in.....	.95
<input type="checkbox"/>	C 26 The Sharpshooter. Size of figure 3¼x2½ in.....	.95
<input type="checkbox"/>	C 27 Over the Top. Size of figure 3¾x2¼ in.....	.95
<input type="checkbox"/>	C 31 Call to the Colors. Size of figure 1½x2½ in.....	.95
<input type="checkbox"/>	C 43 Donald Duck. Size of figure 2½ in.....	.95
<input type="checkbox"/>	C 37 Flash Gordon. Size of figure 2½ in.....	1.00

Check items wanted in above list; write your name and address on bottom of next page and tear out and mail to Home Foundry Mfg. Co., Inc., 3122-24 Fifth Avenue, Chicago. Our latest revised book will be included with your shipment.

ADDITIONAL MOULDS—Make 1 to 5 Figures (Continued)

- C 34 "King Ming." Size of figure 2 $\frac{5}{8}$ in.....\$1.00
- C 52 Popeye the Sailor. Size of figure 2 $\frac{5}{8}$ in..... 1.00
- C 33 G-Men. Size of figure 2 $\frac{5}{8}$ in..... 1.00

EXTRA MASTER CX MOULDS

Make 1 to 3 Extra Large Figures

- C 44 Big Bad Wolf. Size of figure 2 $\frac{5}{8}$ in.....\$2.00
- C 55 Marching Trim. Size of figure 3 $\frac{1}{2}$ in..... 2.00
- C 54 Stunting. Size of figure 3 $\frac{1}{2}$ in..... 2.00
- C 32 You Can't Pass. Size of figure 2 $\frac{3}{4}$ in..... 2.00
- C 48 Machine Gun. Size of figure 4 in..... 2.00
- C 53 The Tough Marine. Size of figure 3 $\frac{1}{2}$ in..... 2.00
- C 47 "Spit 'Em Open." Size of figure 3 $\frac{1}{2}$ in..... 2.00

ACCESSORIES

- Safety Melting Ladle, price each.....\$0.25
- Electric Melting Casting Ladle, price each..... .95
- Electric Melting Stove, Underwriters Approved..... 1.25
- Electric Cord, price each..... .25
- Non-slip Vise, price each..... .25
- Wooden Handles, per pair..... .15
- Four Bottles Paint and Brushes..... .60
- Home Foundry Smoker, price each..... .25
- Special Smoker Liquid, per bottle..... .15
- FX 12 Large Pigs Casting Metal in box..... .35
- FA 36 Pigs Quick Melting Size Casting Metal in box..... .50
- F 36 Large Pigs Casting Metal in package..... .95
- Extra Heating Element..... .25

METALLION TAPPING SETS

- No. 102 Junior Tapping Set.....\$0.69
- No. 103 Large Tapping Set..... 1.00
- No. 104 Double Decker Tapping Set..... 2.00
- No. 103 $\frac{1}{2}$ Special Tapping Set..... 1.50
- No. 104 $\frac{1}{2}$ Extra Special Tapping Set..... 3.00

EXTRA TAPPING PLAQUES AND BOOK ENDS

- No. 509, 3x4 in..... \$0.15
- No. 504, 5 $\frac{1}{2}$ x4 $\frac{1}{2}$ in..... .25
- No. 508, 5 $\frac{1}{2}$ x4 $\frac{1}{2}$ in..... .25
- No. 506, 6 $\frac{1}{2}$ x4 in..... .25
- No. 505, 3x4 in..... .15
- No. 501, 7x10 in..... .35
- No. 510, Bookends (4 pieces)..... .50
- No. 503, 6 $\frac{1}{2}$ x4 in..... .25

Check items wanted in above list; write your name and address below and tear out and mail to Home Foundry Mfg. Co., Inc., 3122-24 Fifth Avenue, Chicago. Our latest revised book will be included with your shipment.

NAME.....

ADDRESS.....

CITY.....STATE.....

Write or Print Name and Address Plainly.

EXTRA TAPPING PLAQUES AND BOOK ENDS (Continued)

<input type="checkbox"/>	No. 507, 6½x4 in.....	\$0.25
<input type="checkbox"/>	No. 511, 3¾x5 in.....	.25
<input type="checkbox"/>	No. 512, 3¾x5½ in.....	.25
<input type="checkbox"/>	No. 513, 3¾x5 in.....	.25
<input type="checkbox"/>	No. 514, 5¼x3¾ in.....	.25
<input type="checkbox"/>	No. 515, 4x4 in.....	.25
<input type="checkbox"/>	No. 516, 7¼x4 in.....	.30

ELECTRIC WONDER PEN AND ACCESSORIES

<input type="checkbox"/>	No. 1001 Wonder Pen Outfit, complete.....	\$1.00
<input type="checkbox"/>	No. 1002 Aristocrat Wood Burning Outfit, complete.....	2.00
<input type="checkbox"/>	No. 1005 Senior Wood Burning Outfit, complete.....	3.00
<input type="checkbox"/>	No. 300 Combination Metal Tapping and Wood Burning Outfit, complete.....	2.00
<input type="checkbox"/>	No. 1075 Electric Air-flow Wood Burning Wonder Pen with Cord and Plug attached.....	.75
<input type="checkbox"/>	No. 1006, 3¾x5½ in.....	.15
<input type="checkbox"/>	No. 1007, 3¾x5½ in.....	.15
<input type="checkbox"/>	No. 1008, 3¾x5½ in.....	.15
<input type="checkbox"/>	No. 1009, 3¾x5½ in.....	.15
<input type="checkbox"/>	No. 1010, 5½x4½ in.....	.25
<input type="checkbox"/>	No. 1011, 5¼x3¾ in.....	.20
<input type="checkbox"/>	No. 1012, 3¾x5 in.....	.15
<input type="checkbox"/>	No. 1013, 3¾x5½ in.....	.15
<input type="checkbox"/>	No. 1014, 3¾x5 in.....	.15
<input type="checkbox"/>	No. 1015, 7¼x4 in.....	.25
<input type="checkbox"/>	No. 1016, Pair, 7½x5 in.....	.25
<input type="checkbox"/>	No. 1017, 4x6 in.....	.25
<input type="checkbox"/>	No. 1018, 4x4 in.....	.20
<input type="checkbox"/>	No. 1019, 6x8 in.....	.25
<input type="checkbox"/>	No. 1020, "Our Favorites," 6 Plaques, Sizes 3½ to 8 in.....	1.00
<input type="checkbox"/>	No. 1021, King Arthur Book Ends, 4x6 in, per pair.....	.50
<input type="checkbox"/>	No. 1022, Special Design Ash Tray, 5½x4½ in.....	.35
<input type="checkbox"/>	No. 1023, Square Panel Wall Hanging, 6x8 in.....	.25
<input type="checkbox"/>	No. 1024, Shaped Panel Wall Hanging, 6x8 in.....	.35
<input type="checkbox"/>	No. 1025, Whatnot Rack, 6x8 in.....	.50

THE NEW SAND PEN

<input type="checkbox"/>	501 Young America Sand Pen Set.....	\$1.00
<input type="checkbox"/>	502 Young America De Luxe Sand Pen Set.....	2.00
<input type="checkbox"/>	503 Sand Pen, complete.....	.25
<input type="checkbox"/>	504 Six Glass Vials Colored Sand, in box.....	.50
<input type="checkbox"/>	505 Bottle Sand Pen Glue and Brush.....	.20
<input type="checkbox"/>	506 Sand Pen Cards, 1 doz. assorted designs.....	.50
<input type="checkbox"/>	507 Colored Sand, 6 colors, in easy pour containers.....	.50

THE KIRO ELECTRIC PENCIL

<input type="checkbox"/>	Kirocraft Electric Pencil Set.....	\$1.00
<input type="checkbox"/>	Kiro Electric Pencil.....	.75
<input type="checkbox"/>	Color Leaf, 2 in. standard rolls, per roll.....	.10
<input type="checkbox"/>	Additional Transfers, each.....	.10

Check items wanted in above list; write your name and address below and tear out and mail to Home Foundry Mfg. Co., Inc., 3122-24 Fifth Avenue, Chicago. Our latest revised book will be included with your shipment.

NAME.....

ADDRESS.....

CITY.....STATE.....

Write or Print Name and Address Plainly.

YOU WILL FIND ORIGINAL HOME
FOUNDRY PRODUCTS ON SALE
AT ALL FIRST CLASS HARDWARE,
DEPARTMENT, TOY AND VARIETY
STORES. IF YOUR DEALER CAN-
NOT SUPPLY YOU, CHECK THE
ITEMS YOU WANT ON THE PAGES
JUST AHEAD AND MAIL YOUR
ORDER TO

THE HOME
FOUNDRY MFG.
CO., INC.

3122-24 FIFTH AVENUE
CHICAGO