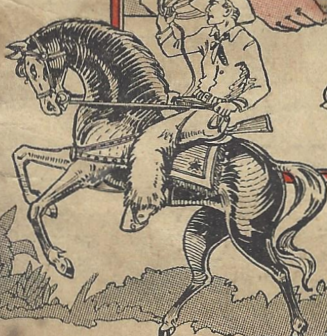


HOME FOUNDRY

Mnfg. Co. inc.



WE NEED NO HELP



Quality
Castings

The book of treasure for boys and girls

Contents

	Page
The Story of Bob Long.....	2
Boy's Delight	3
Casting Outfit A 25.....	4
Casting Outfit A 31.....	5
Casting Outfit B 21.....	6
Casting Outfit B 22.....	7
Casting Outfit B 23 (Description).....	6
Casting Outfit B 24 (Description).....	8
Casting Outfit B 28.....	8
Casting Outfit B 29.....	9
Casting Outfit B 30.....	10
Letter to Dad	11
Electric Casting Set D 21.....	12
Electric Casting Set D 22.....	13
Electric Casting Set D 23 (Description).....	14
Electric Casting Set D 24 (Description).....	15
Electric Casting Set D 28.....	14
Electric Casting Set D 29.....	15
Electric Casting Set D 30.....	16
Extra Moulds	17
Extra Moulds C 21.....	17
Extra Moulds C 22.....	18
Extra Moulds C 23.....	18
Extra Moulds C 24.....	19
Extra Moulds C 25.....	19
Extra Moulds C 26.....	20
Extra Moulds C 27.....	20
Extra Moulds C 28.....	21
Extra Moulds C 29.....	21
Extra Moulds C 30.....	22
Extra Moulds C 31.....	22
Accessories	23
Accessories	24
Automatic Electric Casting Machine "M".....	24
Order Blank on page.....	25
Casting Instructions	26-27
Illustration of Automatic Die Casting Machine on page.....	26
	and back cover

THE STORY OF BOB LONG

Bob Long lived in a small middle-western village with his sister Nan and his widowed mother. The father had been killed in an auto accident years ago and Bob's mother took in washing to earn money enough to keep her family clothed and fed and sheltered. Although they were miserably poor Mrs. Long often told the children that they were really rich because they both had good bodies, good brains, and the willingness to work.

(Continued on page 5)

HOME FOUNDRY

The Boy's Delight and Money-maker

What boy has not thrilled to the bark of the Captain's sharp orders as he watched the drilling of the soldiers.

Of all the games played by the average red-blooded boy, the game of soldier is by far the most popular, and many and wonderful have been the makeshifts to produce the where-with-all to satisfy that craving.

Now at last is available a really practical device that does just that.

With the Home Foundry Casting Set, every boy can now produce his own army, right in his own home—and a finer one, at that, than he ever thought he'd own—and have so much fun in making them that it's a big question which he enjoys more—making the soldiers or playing with them after they're made.

Many of our young friends who bought sets as a most interesting new novelty have become so adept at casting and coloring the various figures that they now take orders from their friends and have landed in the casting business before they knew it.

One boy living in a nearby college town bought the Football set, and just before one of the big national games made a lot of football players, painting two elevens in the colors of the opposing teams that were to play the following Saturday. The playing field he marked on green paper, and, when all was finished and his little men were placed, the effect was so lifelike that he sold quite a number of the complete displays to merchants for their show windows.

This remarkable set consists of a most ingenious mould—made in two halves, locking firmly together—in which the figures are cast; a long handled ladle in which the metal is melted and from which it is poured, mould blacker, paints, brushes, handles, scrapers—in short, everything needed to complete the finest little figures a boy ever saw. (For those who prefer, we make a full electric ladle—just plug into any light socket and you're ready to go.)

In other words, The Home Foundry is one of those clever contrivances—so simple that any seven-year old boy can easily work it—yet so, intensely interesting that invariably Father has to show the boy how he would work it—(if you know what we mean) and he generally stays until the last metal is poured.

The great popularity with which this wonderful little producer was instantly received has prompted nation-wide advertising and distribution, from which you, of course, receive the benefit in a price so low you would not think it possible to produce.

Order your set or additional moulds, if you've already got a set, and get in on the ground floor of this profitable and fascinating play-business.*

HOME FOUNDRY MFG. CO., INC.
2933 W. Madison St., Chicago, Ill.

"THE DANDY FIRST"

Style "A"



A 25

Complete Casting Outfit

Here's a set that really does its name-sake proud. Mold casts five figures, $1\frac{5}{8}$ to 2 inches high—General on horseback, Bugler, Soldier marching, Soldier charging and Sharp-Shooter. With this one set you can produce all the various evolutions of the regular army—It's the biggest value for a dollar any boy ever saw.

SPECIFICATIONS — Set consists of Home Foundry two-piece mould; plated upright casting ladle with hinged cover; 8 pigs of casting metal; two strong colored wooden handles that screw into mould when operating; a most ingenious non-slip vise that holds mould firmly while casting; two screw-top bottles of different color paints, and a camel's hair brush. One each of the five figures cast from this set is included as sample. Attractively boxed in $16 \times 9\frac{1}{4} \times 2$ -inch box, with six-color label depicting set in operation. Full instructions printed on the inside cover of the box.

Complete \$1.00

- 4 -

"CALL TO THE COLORS"

Style "A"



A 31

Complete Casting Outfit

One of the most popular of our groups, and we're giving the boys a real break by including it in this special Style "A" Class. The figures produced— $1\frac{5}{8}$ to $2\frac{1}{8}$ inches high—Snare Drummer, Bugler, Bass Horn Player, Color Bearer and Bass Drummer—are very life-like and always make a tremendous hit—You'll love them.

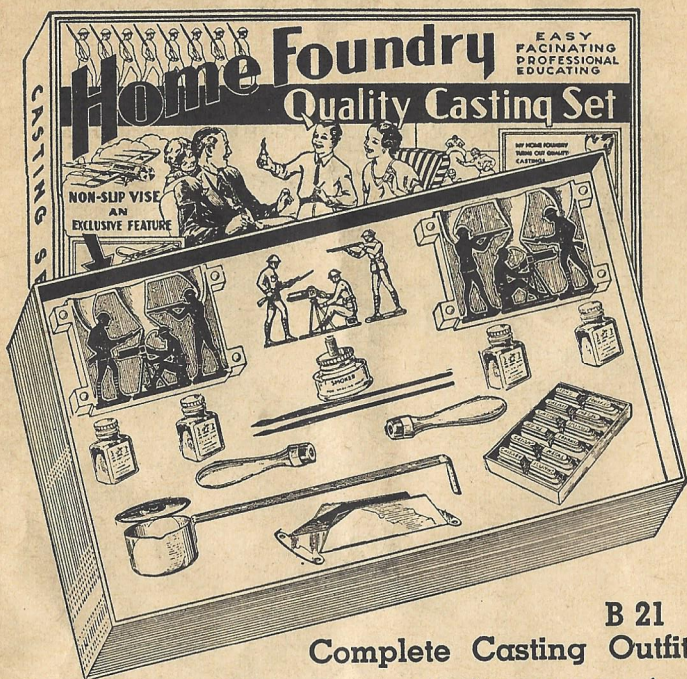
SPECIFICATIONS—Same as A25 on the opposite page.

Complete \$1.00**THE STORY OF BOB LONG (cont.)****Bob Takes The Step**

One day Bob was reading through some magazine pages when he noticed an advertisement which read as follows: "The HOME FOUNDRY CASTING SET is almost like a magical money-maker. It will enable any boy to earn money. Write for full details." Bob thought of his care-worn mother, of his poorly clothed sister and he determined to see if he couldn't earn some money himself and make life easier and happier for them both.

(Continued on page 7)

- 5 -

"HELL-HOLE TOMMIES"—Style "B"**B 21****Complete Casting Outfit**

The most thrilling of all the stories of the big war center about the hair-raising exploits of our gallant machine gun crews—over in France they called them "Hell-hole Tommies." Figures are 2½ inches high, and for real action can't be beat—they include machine gunner in action, soldier charging, and soldier firing.

SPECIFICATIONS—Set includes Home Foundry two-piece registering mould; plated upright casting ladle with hinged cover; 12 pigs of casting metal; 4 jars different colored paints, and 2 camel's hair brushes; Home Foundry smoker for blacking the moulds; 2 strong colored wooden handles that screw into mould when operating, and special non-slip vise that holds moulds firmly together while casting. A set of the completed castings the mould makes is included with the set. Comes to you all packed in substantial 19¼x11½x2½-inch cardboard box with six-color label showing set in operation. Full instructions printed on the inside cover of the box.

Complete \$2.25**"THE SKY PILOT"****Style "B" 23 Casting Outfit**

Mould figures are pictured on Page 18, but arrived too late for set illustration. Set produces modern low-wing monoplane, pilot with parachute, and stewardess. Figures 2¾ inches high.

SPECIFICATIONS—Same as B21 above.

Complete \$2.25**"FIGHTIN' YANKS"****Style "B"****B 22****Complete Casting Outfit**

One of the most popular of our recent soldier sets. So full of pep and fight that the name just came naturally—couldn't call them anything else but "Fightin' Yanks."

Figures produced are—Dashing Cavalryman, Officer with pistol, and marching soldier.

They are 2¾ inches high and full of action in every line.

SPECIFICATIONS—Same as B21 on opposite page.

Complete \$2.25**THE STORY OF BOB LONG (cont.)**

So he answered the advertisement and soon the mailman brought him a colored catalog from the HOME FOUNDRY Manufacturing Co., Chicago, Illinois, which told him how easy it was to earn money casting toys and selling them to stores and friends. The cost of getting started was very little, so Bob showed the catalog to Mrs. Long and asked her to lend him enough money to buy the set. She at last agreed and Bob mailed his Money Order that same night.

(Continued on page 9)

"HIAWATHA"
Style "B"



B 28

Complete Casting Outfit

Some of our young friends who have gone into the business of making and selling Home Foundry figures tell us that "Hiawatha" is one of their very best sellers.

Many beautiful effects can be produced with the figures of this set. It includes Indian with bow and arrow, Indian tepee, and a leaping deer. Figures are 2½ inches high.

SPECIFICATIONS—Same as B21 on page 6.

Complete \$2.25

"THE SPEED DEMON"
Style "B" 24 Casting Outfit

Mould figures are pictured on Page 19, but arrived too late for set illustration. Makes a very snappy group—Racing car and driver, Starter with flag and Mechanic with tire. Figures 2½ inches high.

SPECIFICATIONS—Same as B21 on page 6.

Complete \$2.25

"PAWNEE BILL"
Style "B"



B29

Complete Casting Outfit

O Boy! Here's the real companion piece to "Hiawatha"—old "Pawnee Bill," himself.

Wouldn't hardly have to tell who it is—every boy knows "Pawnee Bill." This set makes him so lifelike, with his saddled "bronc" and his big long six-shooter, that a lot of boys are going into the wild west show business the minute they see this set.

You know, boys have just got to get this Wild West stuff out of their systems, and this is the way to do it.

Figures are 2½ inches high and work in swell with the Indian or Soldier Figures.

SPECIFICATIONS—Same as B21 on page 6.

Complete \$2.25

THE STORY OF BOB LONG (cont.)

Bob Makes Money Fast

In a surprisingly few days the mail-man again walked up to Bob's door and handed him a beautifully-wrapped package inside of which was a complete HOME FOUNDRY CASTING SET. He quickly read the simple directions and in a few minutes was turning out the neatest metal soldiers you ever saw. He painted them in a jiffy, with the help

(Continued on page 11)

"GED DRANGE"

Style "B"



B 30

Complete Casting Outfit

Here's the set your young he-man boys go for in a big way. What boy has not breathlessly followed the exploits of the famous "Gallop Ghost," over the radio, and then while the spirit was on him gone out to run off plays with the kids that were simply unstopable.

Well, it works the same way with these figures—there are three of them in the set—lineman, fullback carrying the ball and quarterback, all in full action, and they're real pippins—We told you on Page 3 how one clever youngster paid for his set many times over by making football teams and selling them to merchants for window displays. Well, why don't you do the same thing. Get busy. Figures are 2½ inches high.

SPECIFICATIONS—Same as B21 on page 6.

Complete \$2.25

- 10 -

**AN OPEN LETTER TO
DAD AND MOTHER**

Dear Folks:

Your child wants to get a HOME FOUNDRY CASTING SET for two good reasons; first, to make money by selling metal toys cast with this outfit; second, to have lots of fun casting the toys.

There are several other reasons, equally important, why YOU, too, should be intensely interested in such a pleasure and profit project for your child.

DAD . . . casting and selling HOME FOUNDRY Toys will give your child a BUSINESS TRAINING that money can't buy. It will teach your child to appreciate the VALUE of a dollar . . . the art of making a PROFIT . . . and the importance of SAVING a good share of those profits. Moreover, this will help solve the problem of "spending money" for which you now dig down in your pocket. Your child can, instead, earn and spend the money himself or herself without having to BEG it from you. Thus you teach your child self-reliance and the ability to stand on his own feet.

MOTHER . . . a Home Foundry Casting Set will help keep your child off the street, and keep him BUSY and HAPPY at home. In addition, it teaches handicraft to your child. Most of all, it educates and stimulates the child's intellect. In view of all these educational and business TRAINING features, you will be doing your child and yourself a real favor by investing the few cents necessary to purchase and operate a genuine HOME FOUNDRY QUALITY Casting Set. Do not give your boy or girl the money outright to purchase a set and moulds, but tell them you will LOAN THEM THE MONEY to get started.

Yours, for Fun, Profit and Education,

HOME FOUNDRY MFG. CO.

THE STORY OF BOB LONG (cont.)

of Nan. Bob then selected samples of his different castings and called on several of the neighborhood stores, returning home that night with \$5.00 worth of orders in his pockets. He ran to his mother and proudly placed them in her lap. They were a very happy family that night.

A few weeks later Bob had become the "head of the household" and was earning more money in one day with his casting set than what his mother made in a week of doing washings. Besides this, Bob had some spending money of his own, and had started a small bank account at the leading bank. He kept adding to it every week.

A Proud Day For Mrs. Long

Mrs. Long soon gave up her hard laundry work and devoted all her time to Bob's toy casting business. And within a year, the little family moved to a bigger house in a nicer part of town, had plenty of money for food and clothes, and made many new friends. Bob was already planning to go to college when he grew old enough. But the

(Continued on page 13)

- 11 -

"HELL-HOLE TOMMIES"

Style "D"



D 21

Electric Casting Outfit

The most thrilling of all the stories of the big war center about the hair-raising exploits of our gallant machine gun crews—over in France they called them "Hell-hole Tommies." Figures are 2½ inches high, and for real action can't be beat—they include machine gunner in action, soldier charging, and soldier firing.

SPECIFICATIONS—Style D, equipped with Electric, Hinge-Cover Casting Ladle—made to work with any standard electric cord—and has a strong colored wooden screw type handle; two-piece registering three-figure Home Foundry mould with 2 strong colored wooden handles that screw into mould, to hold when operating; special non-slip vise that grips moulds firmly together while casting; Home Foundry smoker for blacking the moulds; 12 pigs of casting metal; 4 jars of different colored paints and 2 brushes—A sample set of the completed castings mould makes is included—Packed complete in substantial cardboard box, 19x11½x2½-inches, with beautiful 6-color cover—Full instructions printed on the inside cover of the box.

Complete \$2.95

- 12 -

"FIGHTIN' YANKS"

Style "D"



D 22

Electric Casting Outfit

One of the most popular of our recent soldier sets. So full of pep and fight that the name just came naturally—couldn't call them anything else but "Fightin' Yanks."

Figures produced are—Dashing Cavalryman, Officer with pistol, and Marching Soldier.

They are 2½ inches high and full of action in every line.

SPECIFICATIONS—Same as D21 on the opposite page.

Complete \$2.95**THE STORY OF BOB LONG (cont.)**

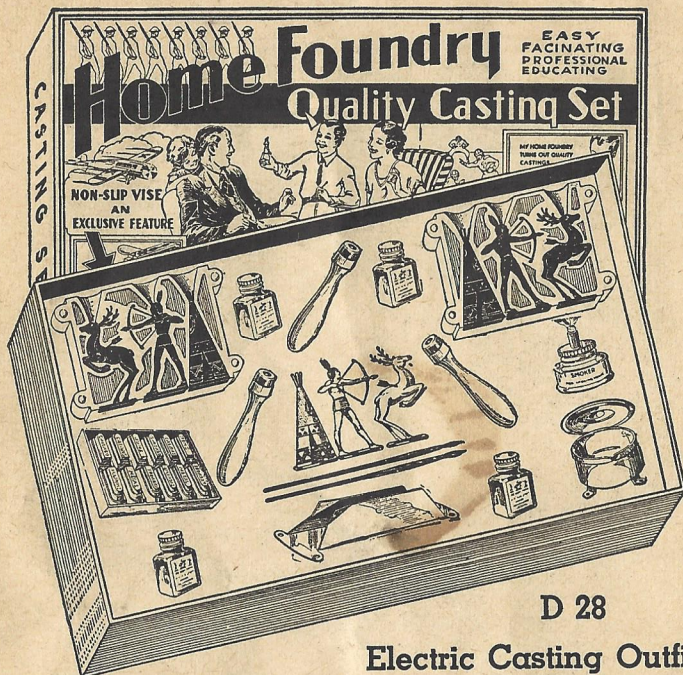
thing that brought the greatest joy to his mother, was the day the leading banker, Mr. Jones, stopped her on the street and said: "Mrs. Long, I have been watching the fine progress you and your son have made during the past year. I only wish to tell you that as soon as Bob is through schools there will be a job waiting for him in my bank. Bob has the type of ambition, initiative and brains that we want in our bank."

When Bob heard the glad news that night, he danced a jig for joy. Then, waltzing over to the table, he lovingly placed his hand on his HOME FOUNDRY CASTING SET and said: "Mother, the day I sent for this outfit was the LUCKIEST day of my life. It has truly been a magical money-maker for us."

(Continued on page 14)

- 13 -

"HIAWATHA"
Style "D"



D 28

Electric Casting Outfit

Some of our young friends who have gone into the business of making and selling Home Foundry figures tell us that "Hiawatha" is one of their very best sellers.

Many beautiful effects can be produced with the figures of this set. It includes Indian with bow and arrow, Indian tepee, and a leaping deer. Figures are 2½ inches high.

SPECIFICATIONS—Same as D21 on page 12.

Complete \$2.95

"THE SKY PILOT"

Style "D" 23 Electric Casting Outfit

Fully equipped with electric melting ladle.

Mould figures are pictured on Page 18, but arrived too late for set illustration. Set produces modern low-wing monoplane, pilot with parachute, and stewardess. Figures 2¼ inches high.

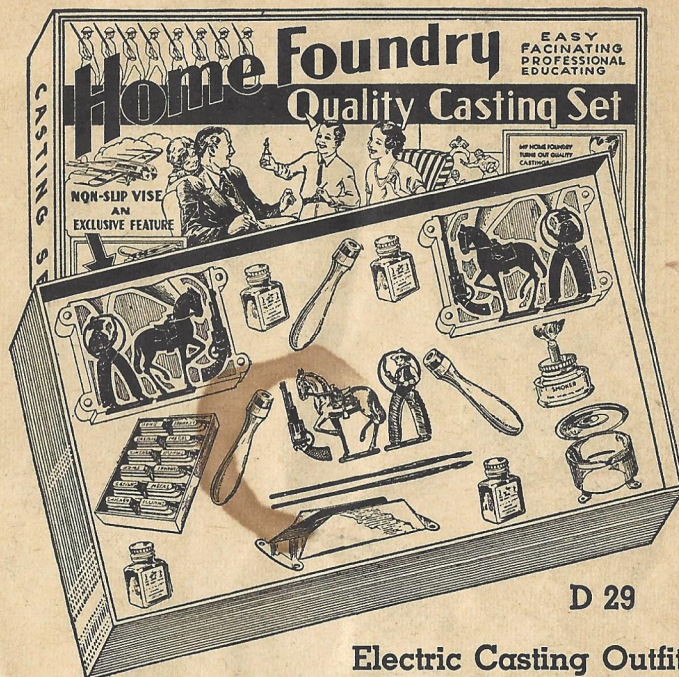
SPECIFICATIONS—Same as D21 on Page 12.

Complete \$2.95

THE STORY OF BOB LONG (cont.)

BOB SAYS: "Say, you fellows reading this can do as well as I have. But be SURE and get a HOME FOUNDRY CASTING SET. They're the BEST. If you haven't got enough 'ready' cash, ask your dad or mother. They'll be glad to help 'finance' you long enough to get started. And DO IT NOW!"

"PAWNEE BILL"
Style "D"



D 29

Electric Casting Outfit

O Boy! Here's the real companion piece to "Hiawatha"—old "Pawnee Bill," himself.

Wouldn't hardly have to tell who it is—every boy knows "Pawnee Bill." This set makes him so lifelike, with his saddled "bronc" and his big long six-shooter, that a lot of boys are going into the wild west show business the minute they see this set.

You know, boys have just got to get this Wild West stuff out of their systems, and this is the way to do it.

Figures are 2½ inches high and work in swell with the Indian or Soldier Figures.

SPECIFICATIONS—Same as D21 on page 12.

Complete \$2.95

"THE SPEED DEMON"

Style "D" 24 Electric Casting Outfit

Fully equipped with electric melting ladle.

Mould figures are pictured on Page 19, but arrived too late for set illustration. Makes a very snappy group—Racing car and driver, starter with flag, and mechanic with tire. Figures 2½ inches high.

SPECIFICATIONS—Same as D21 on Page 12.

Complete \$2.95

"GED DRANGE"

Style "D"



D 30

Electric Casting Outfit

Here's the set your young he-man boys go for in a big way. What boy has not breathlessly followed the exploits of the famous "Gallop Ghost," over the radio, and then while the spirit was on him gone out to run off plays with the kids that were simply unstopable.

Well, it works the same way with these figures—there are three of them in the set—lineman, fullback carrying the ball and quarterback, all in full action, and they're real pippins—We told you on Page 1 how one clever youngster paid for his set many times over by making football teams and selling them to merchants for window displays. Well, why don't you do the same thing. Get busy. Figures are 2½ inches high.

SPECIFICATIONS—Same as D21 on page 12.

Complete \$2.95

EXTRA MOULDS

The immediate and widespread popularity accorded these wonderful casting outfits is, of course, due primarily to the Two-piece, Self-registering Home Foundry Moulds.

Substantially made and hand finished, these moulds are built to stand up under long and hard service. They are fully interchangeable and are giving universal satisfaction wherever used. Keep your moulds clean and dry, and see that they are always completely blacked before casting. Occasional failures can invariably be traced to dirty moulds or careless smoking.

IMPORTANT — (1) Moulds must be hot for best results. Make several casts to warm thoroughly, throwing first figures back into the pot—BUT DON'T try to hurry heating of moulds over gas or other hot flame—you'll ruin them.

(2) Never touch hot moulds or pots with fingers—always use pinchers.

(3) Always use Home Foundry Casting Metal—it is a formula specially made for these sets—quick melting and smooth flowing.

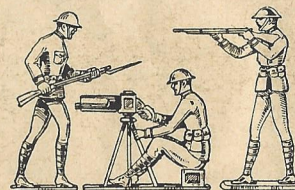
We have found it a fact that no sooner has a boy received his Home Foundry Casting Outfit and become acquainted with it, than along comes an order for additional moulds to complement his store of figures.

To take care of this demand, we have run up a lot of moulds only, packing them in substantial individual boxes with full instructions on each. Moulds now available are listed on the following pages.

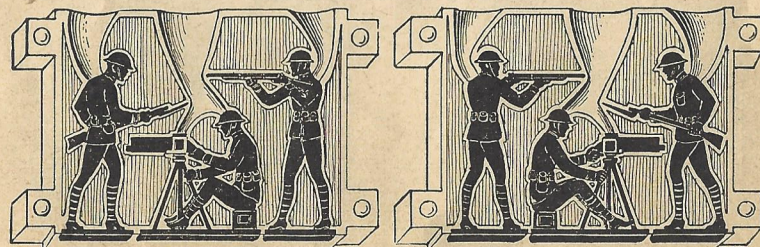
Please order by number, using Order Blank printed on Page 25 for that purpose.

"HELL-HOLE TOMMIES"

C 21



2 1/8 in.

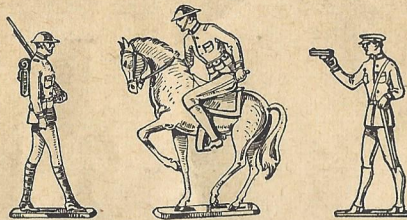


One of our most popular moulds. Casts three figures—Machine Gunner in action, Soldier Charging and Sharpshooter. Figures are 2 1/8 inches. Each mould is packed in individual display box.

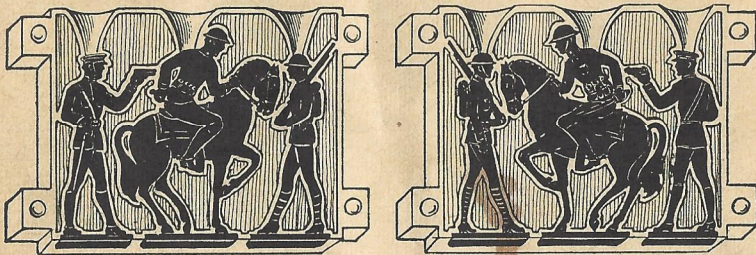
Price each \$0.95

"FIGHTIN' YANKS"

C 22



2 5/8 in.

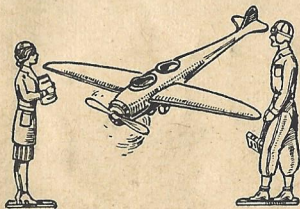


Here's a real action group—dashing cavalryman, officer firing pistol and marching soldier. Figures are 2 5/8 inches high, and are great favorites. Each mould is packed in individual display box.

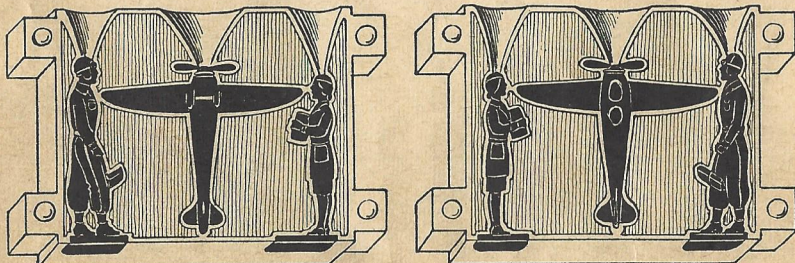
Price each \$0.95

"THE SKY PILOT"

C 23



2 1/4 in.

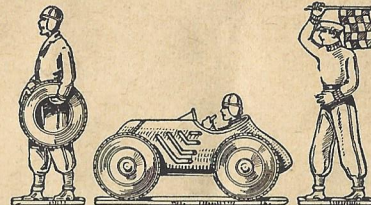


One of our newer cuttings. Mould casts modern low-wing monoplane, pilot with parachute and stewardess—2 1/4 inches high. Each mould is packed in individual display box.

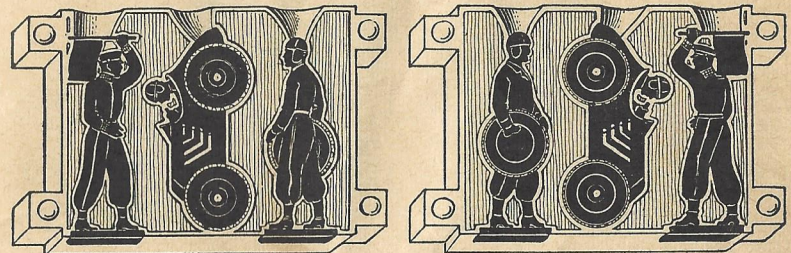
Price each \$0.95

"THE SPEED DEMON"

C 24



2 1/2 in.



Another of our late groups. Makes racing car and driver, starter with flag and mechanic holding tire. Figures are 2 1/2 inches high. Each mould is packed in individual display box.

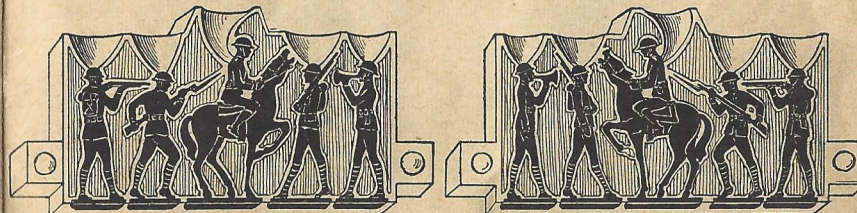
Price each \$0.95

"THE DANDY FIRST"

C 25



1 5/8 to 2 in.

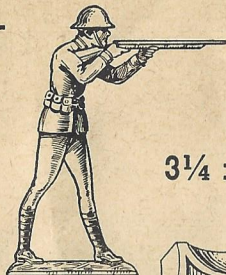


One of our best sellers. Makes five figures—General on horseback, bugler, soldier marching, soldier charging and sharpshooter. Figures range in size from 1 5/8 to 2 inches. Each mould is packed in individual display box.

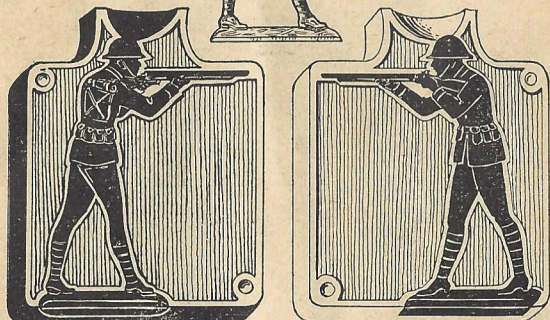
Price each \$0.95

"THE SHARP-SHOOTER"

C 26



3 1/4 x 2 1/2 in.

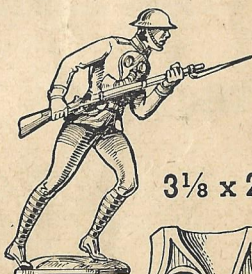


Specially produced to supply a larger casting of this popular favorite. Figure is 3 1/4 x 2 1/2 inches. Each mould is packed in individual display box.

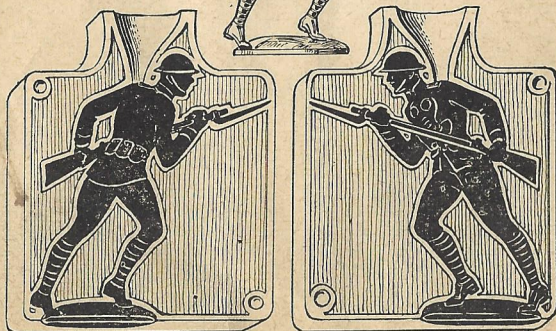
Price each \$0.95

"OVER THE TOP"

C 27



3 1/8 x 2 3/4 in.



Another favorite that we've had to make larger to satisfy our boys—makes figure 3 1/8 x 2 3/4 inches. Each mould is packed in individual display box.

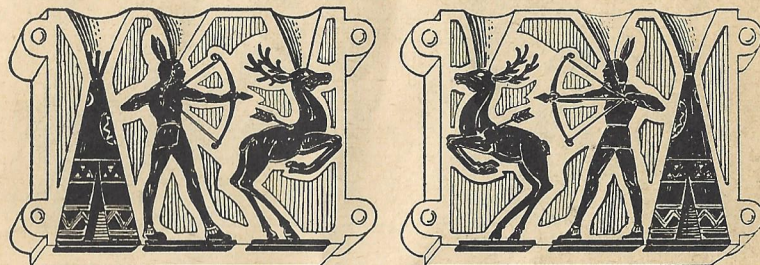
Price each \$0.95

"HIAWATHA"

C 28



2 1/8 in.

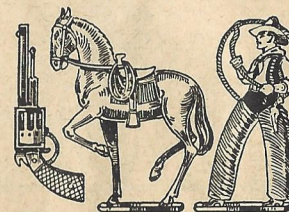


Our popular Indian hero with his tepee and bounding deer are made by this set. Figures are 2 1/8 inches high. Each mould is packed in individual display box.

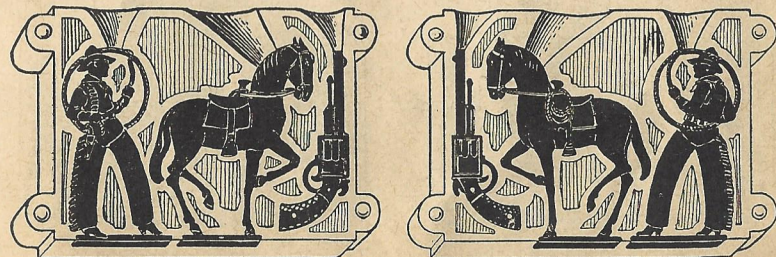
Price each \$0.95

"PAWNEE BILL"

C 29



2 1/8 in.



A hot favorite. Makes "Old Bill" with his lariat, his "bronc" and his big six-shooter. Figures 2 1/8 inches. Each mould is packed in individual display box.

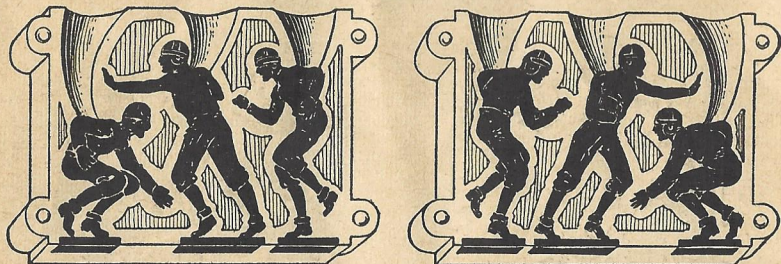
Price each \$0.95

"GED DRANGE"

C 30



2½ in.



Here's our popular football group. Real action figures of lineman, fullback carrying ball and quarterback, 2½ inches high. Each mould packed in individual display box.

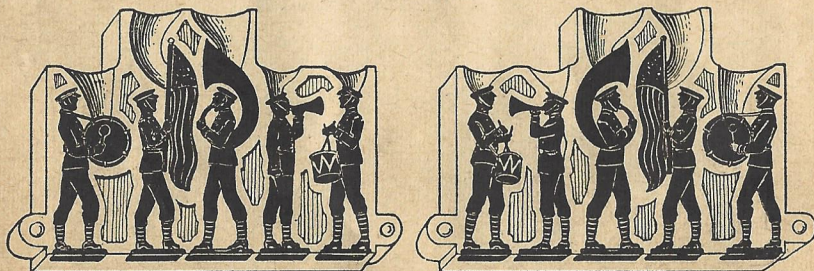
Price each \$0.95

"CALL TO THE COLORS"

C 31



1⅝ x 2⅛ in.



One of our finest groups. Makes snare drummer, bugler, bass horn player, color bearer and bass drummer. Figures 1⅝ to 2⅛ inches high. Each mould packed in individual display box.

Price each \$0.95

HOME FOUNDRY ACCESSORIES



SAFETY MELTING LADLE

Ladle for melting metal with hinged cover; made with flat bottom and safety leg at end of handle so it can be set down without tipping.

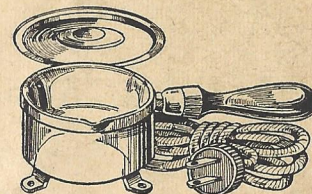
Price each \$0.25

ELECTRIC METAL CASTING LADLE

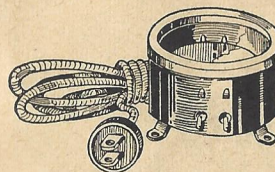
This is the electric metal casting ladle and stove complete with base stand and screw-type wood handle. Will work with any standard electric cord.

Price each \$0.95

Electric Cord EXTRA 0.25



ELECTRIC MELTING STOVE



A clever electric stove made so that A & B Casting ladle sets into the heater easily and quickly bringing metal to proper temperature.

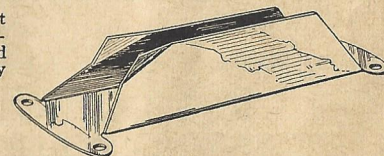
Price each \$0.75

Electric Cord EXTRA 0.25

HOME FOUNDRY NON-SLIP VISE

A most ingenious contrivance that holds the two halves of mould firmly together while casting, yet mould can be slipped in and out very readily.

Price each \$0.25



WOODEN MOULD HANDLES



Do not heat readily and are made to screw in and out of mould and electric ladle to facilitate packing.

Price per pair \$0.15

ELECTRIC CORD

To be used with electric stove or ladle.

Price each \$0.25

EXTRA PAINT SET



For painting metal figures. Set contains 4 different colored paints and 2 camel hair brushes.



Price per set \$0.60

HOME FOUNDRY SMOKER



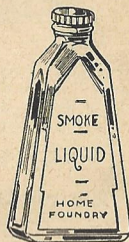
All moulds should be carefully smoked before casting. This smoker does it thoroughly and easily.

Price each \$0.25

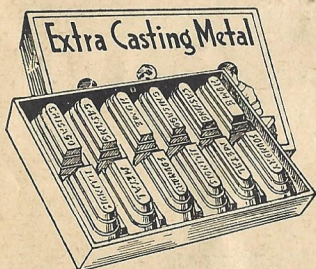
SPECIAL SMOKE LIQUID

For use with the Home Foundry Smoker.

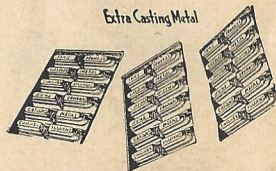
Price per bottle \$0.15



EXTRA CASTING METAL



Extra Casting Metal



This metal is specially selected for the making of cast figures. Melts quickly and pours smoothly.

Price, 12 pigs in a box \$0.25

36 large pigs in package \$0.60

AUTOMATIC ELECTRIC CASTING MACHINE OUTFIT

"M"

(Illustrated in Colors on Back Cover)

The last word in Electric Casting Outfits. Not just a flimsy toy, but a substantially constructed and attractively finished machine for casting figures automatically. Equipped with mould that casts 3 large assorted figures, 16 pigs of casting metal, two jars of different color paint, paint brush, pincher, scraper, socket wrench and standard electric cord. All packed in substantial box.

Complete \$3.95

ORDER BLANK

Date.....

Home Foundry Mfg. Co., Inc.,
2933 W. Madison Street, Chicago.

Gentlemen:

Please ship to address below items checked in the following list: **Send 25c Extra for all orders under \$2.00**

- A 25 Casting Outfit, complete.....\$1.00
- A 31 Casting Outfit, complete.....1.00
- B 21 Casting Outfit, complete.....2.25
- B 22 Casting Outfit, complete.....2.25
- B 23 Casting Outfit, complete.....2.25
- B 24 Casting Outfit, complete.....2.25
- B 28 Casting Outfit, complete.....2.25
- B 29 Casting Outfit, complete.....2.25
- B 30 Casting Outfit, complete.....2.25
- D 21 Casting Outfit, complete.....2.95
- D 22 Casting Outfit, complete.....2.95
- D 25 Casting Outfit, complete.....2.95
- D 24 Casting Outfit, complete.....2.95
- D 28 Casting Outfit, complete.....2.95
- D 29 Casting Outfit, complete.....2.95
- D 30 Casting Outfit, complete.....2.95
- "M" Automatic Electric Casting Machine Outfit, complete.....3.95
- Mould C 21, "Hell-hole Tommies," per set......95
- Mould C 22, "Fightin' Yanks," per set......95
- Mould C 23, "The Sky Pilot," per set......95
- Mould C 24, "The Speed Demon," per set......95
- Mould C 25, "The Dandy First," per set......95
- Mould C 26, "The Sharpshooter," per set......95
- Mould C 27, "Over The Top," per set......95
- Mould C 28, "Hiawatha," per set......95
- Mould C 29, "Pawnee Bill," per set......95
- Mould C 30, "Ged Drange," per set......95
- Mould C 31, "Call to The Colors," per set......95
- Safety Melting Ladle, price each......25
- Electric Melting Stove, price each......75
- Electric Metal Casting Ladle, price each......95
- Electric Cord, price each......25
- Non-slip Vise, price each......25
- Wooden Handles, per pair......15
- Four Bottles Paint and Brushes......60
- Home Foundry Smoker, price each......25
- Special Smoke Liquid, per bottle......15
- 12 pigs Casting Metal in box......25
- 36 pigs Casting Metal in package......60

Money Order Enclosed, for \$.....

Name.....

Address.....

City.....State.....

Write or Print Name and Address Plainly

Keep this book—New Order Blank will be mailed with your order.

"MICKEY MOUSE"

Home Foundry Casting Sets Catalog now in course of production.—WRITE FOR IT.

You will find The Original Home Foundry Casting Sets

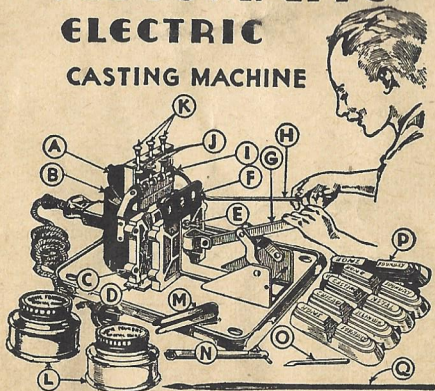
on sale at all first-class toy, hardware, department and variety stores. If your dealer cannot supply you, check the items you want in the proper square, tear out the Order Blank and mail to

HOME FOUNDRY MFG. CO., INC.

2933 W. Madison St.
CHICAGO

HERE YOU ARE, BOYS

AUTOMATIC ELECTRIC CASTING MACHINE



Fully Described on Page 24

INSTRUCTIONS FOR OPERATING AUTOMATIC ELECTRIC CASTING MACHINE

Before connecting electric cord, operator should thoroughly familiarize himself with the details and operation of the AUTOMATIC ELECTRIC CASTING MACHINE.

To begin casting operations proceed as follows:

FIRST—Clean both wings of mould of all dust and foreign matter; then carefully smoke inner surface of mould where the figures are until entirely blackened.

SECOND—Now press down on Lever (G), which closes and locks the mould.

THIRD—Place metal pigs in furnace Pot (B), carefully closing lid whenever melting.

FOURTH—Attach electric cord, which you can plug into any electric light socket to melt your metal. About ten minutes will be required to make metal liquid.

FIFTH—You are now ready to cast. While smoking the mould you noticed the three dies of the figures the mould will cast, and the three gates or openings through which the liquid metal enters the moulds. These gates are opened and closed by three Thumb-wheels (I) which slide back and forth on ratchet shaft and are operated, when engaged, by Hand Lever (H). Always keep these thumb-wheels free unless casting.

To make center figure of the mould, move center thumb-wheel to the right against the center pin, then slowly raise and lower Lever (H) until thumb wheel engages lifting foot, raising the pin. This permits metal to flow into mould. Hold it open until mould is full and metal appears in bottom of gate funnel. Moving lever down quickly releases the pin and shuts off the metal. Follow the same procedure when you want either the right or left hand figures moving the thumb-wheel up against the pin over the figure you wish to cast. When through casting always remove thumb-wheel to the left away from the pins.

SIXTH—To remove figures, raise Handle (G) as far as it will go, using scraper to loosen them and always use Pincher (M) to handle hot figures or hot moulds.

You can cast as many figures as you wish, merely add additional metal to the pot as needed, and be sure to ALWAYS wipe all foreign matter and any lead that may remain before casting again.

SEVENTH—To change moulds, unscrew nuts with socket wrench furnished for that purpose. Insert new mould and screw on nuts loosely. Then close mould carefully, being sure that it registers. Now tighten both nuts, and you're ready to go again.

CASTING INSTRUCTIONS FOR "D" ELECTRIC CASTING OUTFITS

FIRST—Attach handles by screwing them on to moulds, turning to the right.

SECOND—Smoke the entire surface of the mould on the sides where the figures are until it is entirely blackened. Smoke them over Home Foundry Smoker.

THIRD—Place the two halves of the mould together, then slide them into the mould clasp through the side of the clasp that has the corners bent outward to receive the mould. Make sure that the mould is in the center of the clasp and that the bottom of the mould is all the way down against the bottom plate of the clasp.

FOURTH—The mould clasp can be screwed on top of whatever you use for a workbench.

FIFTH—Connect handle to the electric ladle by turning to the right. Use base of the electric ladle, and place sufficient casting metal in same. Use iron cord to connect to the prongs of the ladle and let melt until metal is entirely fluid. Electric ladle must be covered at all times.

SIXTH—To cast figures pour enough metal into the openings (gates) of the mould until they are almost full.

SEVENTH—To remove castings take hold of both handles and slide the mould out of the clasp; then separate the halves of the mould and remove castings. Do not touch the castings with your bare hands while they are hot.

EIGHTH—Remove surplus metal such as the gates by snapping them off the castings. This surplus metal can be used over again.

NINTH—Use brushes and HOME FOUNDRY Special Paints for coloring your castings. Stir the paints well before using.

CASTING INSTRUCTIONS FOR "A" AND "B" CASTING OUTFITS

FIRST—Attach handles by screwing them on to moulds, turning to the right.

SECOND—Smoke the entire surface of the mould on the sides where the figures are until it is entirely blackened. Smoke them over Home Foundry Smoker.

THIRD—Place the two halves of the mould together, then slide them into the mould clasp through the side of the clasp that has the corners bent outward to receive the mould. Make sure that the mould is in the center of the clasp and that the bottom of the mould is all the way down against the bottom plate of the clasp.

FOURTH—The mould clasp can be screwed on top of whatever you use for a workbench.

FIFTH—Place sufficient casting metal in the ladle and heat over Home Foundry Electric Melting Stove or a gas flame or some similar heating device until the metal is entirely fluid. Keep ladle covered at all times.

SIXTH—To cast figures pour enough metal into the openings (gates) of the mould until they are almost full.

SEVENTH—To remove castings take hold of both handles and slide the mould out of the clasp; then separate the halves of the mould and remove castings. Do not touch the castings with your bare hands while they are hot.

EIGHTH—Remove surplus metal such as the gates by snapping them off the castings. This surplus metal can be used over again.

NINTH—Use brushes and HOME FOUNDRY Special Paints for coloring your castings. Stir the paints well before using.

Note: All moulds must be thoroughly smoked. Use Home Foundry Smoker and Liquid.

Caution: See that the casting metal you are about to use, also the mould and clasp are perfectly dry before you start, and keep water or any other liquid away from all your equipment during the entire operations. It is advisable to wear gloves for this work.

AUTOMATIC! ELECTRIC! CASTING MACHINE



MANUFACTURED BY

HOME FOUNDRY MFG. CO., Inc.

2933 West Madison St.
CHICAGO